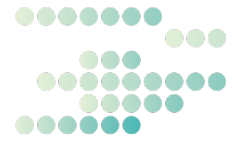


PRESSURE ULCER/INJURY RECURRENCE

FACT SHEET 8 DYSPHAGIA RISK FACTORS AND ALERT SIGNS (FOR PROFESSIONALS)



Page 1 of 1

Dysphagia risk factors and alert signs

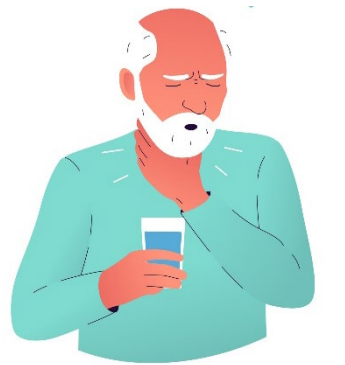
Risk factors

- Supine position
- Spinal shock
- Slowing of gastrointestinal tract
- Gastric reflux
- Inability to turn the head to spit out regurgitated material
- Nausea-inducing medication
- Recent anterior cervical spine surgery
- Presence of tracheostomy
- Age.



Alert signs

- Swallowing difficulty or moving food in the mouth,
- Difficulty keeping food in the mouth and initiating swallowing,
- Wet voice (after swallowing) or nasal speech,
- Food residue in the mouth after swallowing,
- Loss of liquids from the oral cavity,
- Nasal regurgitation.



Note: Dysphagia patients are at higher risk of malnutrition which can lead to an increased risk of PUs!