

The 36th Conference of the  
European Wound Management Association  
– In cooperation with DEWU

# EWMA 2026

DE WU  
DEUTSCHER  
WUNDKONGRESS



WundD.A.CH

Technical Manual

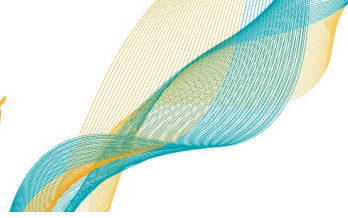


BREMEN, GERMANY  
6 - 8 MAY 2026



## Table of Contents

Contact information .....	3
EWMA-DEWU 2026 conference .....	3
Opening and access hours .....	3
Social event.....	4
Plan your exhibition .....	4
Exhibitor directory .....	5
Floor plan .....	5
Storage space.....	5
Meeting rooms .....	5
Sharing of contact details .....	5
For the Italian pharma companies (for AIFA application).....	6
Conference venue.....	7
Virtual tool.....	7
Messe Bremen Webshop.....	7
Shell scheme packages .....	8
Exhibitor General Regulations .....	9
Ethical guidelines for exhibitors at EWMA .....	9
Deliveries .....	9
Building height.....	9
Approval of stand construction and design.....	10
Stand approval procedure .....	10
Stand building regulations .....	10
Contractor’s access.....	11
Rules and Regulations – advertising .....	12
Advertising activities.....	12
Advertising in the exhibition area.....	12
Branding possibilities.....	12



Symposium information ..... 13

    Simultaneous translation ..... 13

    Speakers' information ..... 13

    Symposium presentation instructions ..... 14

    Catering for symposia ..... 14

Exhibitor registration ..... 15

    Exhibitor badges ..... 15

    Stand personnel ..... 15

    Access to the exhibition area outside opening hours ..... 15

    General Terms ..... 15

    Registration guide ..... 17

External suppliers ..... 18

    Official hotel accommodation agent - Codan Consulting ..... 18

    Official logistics partner - DSV ..... 19

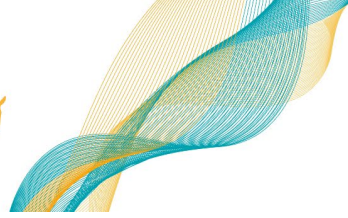
    Show Ready Stand solution by GES ..... 20

    Customized Stand Builder - Spiro ..... 21

    Official lead retrieval - fielddrive Leads ..... 23

    Mole Digital - Filming, video, and social media ..... 24

Overview of deadlines: ..... 25



## Contact information

EWMA Secretariat  
Nordre Fasanvej 113  
DK-2000 Frederiksberg

Tel.: +45 70 20 03 05  
E-mail: [ewma@ewma.org](mailto:ewma@ewma.org)  
Website: [www.ewma.org](http://www.ewma.org)

### EWMA Industry Team

Charlotte Vedsted	Sponsorship & Exhibition Manager:	<a href="mailto:cv@ewma.org">cv@ewma.org</a>
Oliver Toft	Sponsorship & Exhibition Manager:	<a href="mailto:otc@ewma.org">otc@ewma.org</a>
Vera Paramonova	Sponsorship & Exhibition Assistant:	<a href="mailto:vp@ewma.org">vp@ewma.org</a>
Registration Team		<a href="mailto:registration@ewma.org">registration@ewma.org</a>

[Industry@ewma.org](mailto:Industry@ewma.org)

## EWMA-DEWU 2026 conference

### Opening and access hours

Exhibition build-up	Date	Access stand-builders
Sunday	3 May	No official build-up on this day

If you require early build-up time on Sunday, 3 May, access must be booked with Messe Bremen through their [webshop](#) or directly at [technik@pflege-wundkongress.de](mailto:technik@pflege-wundkongress.de).

Monday	4 May	08:00-24:00	<i>Space only exhibitors with +25 sqm.</i>
Tuesday	5 May	08:00-23:00	<i>All exhibitors</i>

Exhibition	Date	Exhibitors access hrs.	Exhibition opening hrs
Wednesday	6 May	07:00-18:30	09:00-17:45
Thursday	7 May	08:00-18:00	08:30-17:45
Friday	8 May	08:00-23:00	08:30-15:15

Dismantling	Date	Access dismantling staff
Friday	8 May	16:15-23:00*

### Please note:

To ensure a good participant experience and access to/from session rooms through the exhibition area, dismantling before the official dismantling hours is not permitted.

- Exhibitors/sales staff can start packing down from 15:15.
- Heavy dismantling including breakdown of stands, access for dismantling crews, vehicle access is allowed from 16:15, after forwarding company has delivered the cases to the stands.

### \*Important regarding dismantling:

Dismantling must be finished within official dismantling hours. By 23:00 all stand elements must be removed from the exhibition area. If additional time is needed for dismantling on Saturday 9 May, please book this through the [Messe Bremen webshop](#) or contact Messe Bremen directly at [technik@pflege-wundkongress.de](mailto:technik@pflege-wundkongress.de).



## Social event

In keeping with German tradition, there are plans for a Joint Get-together Evening on **Thursday 7 May**, uniting all participants, exhibitors, and faculty to meet for an enjoyable and fun evening with live music, food and drinks.

To make the most of this shared celebration, we kindly ask companies not to schedule own social events or dinners on Thursday 7 May.

Further information on the get-together including ticket prices and practical details will be available when we get closer to the conference.

## Plan your exhibition

We have gathered all relevant information on the EWMA-DEWU 2026 Sponsor & Exhibitor webpage in the '[Plan your exhibition](#)' section. Here you find conference details and information about the venue, webshop, registration, storage space, symposium information, stand design, etc.


### External Suppliers

Logistics Partner	Hotel Accommodation	Filming, Video, SoMe	Lead Retrieval



## Exhibitor directory

Your company information will be added to the EWMA-DEWU 2026 exhibitor directory.

The complete information will be posted on the [EWMA-DEWU 2026 Exhibitors](#) page and the EWMA-DEWU 2026 App. Please provide your company information for the exhibitor directory in the online form [here >>>](#).

If you participated in EWMA-GNEAUPP 2025 in Barcelona and wish to reuse the information, please confirm using the online form. You can find your previously provided information on the EWMA 2025 homepage: <https://ewma.org/2025conference/exhibitors/>.

**Deadline:** 31 January, 2026

## Floor plan

The floor plan shows entrances, café/refreshment areas, and flow to the session rooms inside the exhibition hall.

The Floor Plan is available [here >>>](#).

The technical floor plan is available [here >>>](#).

## Storage space

Storage spaces are available for purchase. A storage has shell scheme walls and a lockable door.

To make a booking, please contact EWMA Industry directly at [industry@ewma.org](mailto:industry@ewma.org).

## Meeting rooms

Meeting rooms are available upon request. Please send your request to [industry@ewma.org](mailto:industry@ewma.org)

**Please note** that the price for renting a meeting room does not include the cost of AV equipment, catering, or customized set-up.

Kindly write directly to the Sponsorship & Exhibition manager, Charlotte Vedsted, at [cv@ewma.org](mailto:cv@ewma.org) to order the necessary technical equipment.

## Catering for meetings

Can be ordered via the [Messe Bremen Webshop](#).

## Sharing of contact details

Your contact details (name and e-mail) will be shared with our external suppliers used for practical information and services relating to EWMA-DEWU 2026 only:

- Conference venue (webshop) [Messe Bremen](#)
- Hotel accommodation [Codan Consulting](#)
- Logistic services [DSV](#)
- Customized stand-builder [GES](#)
- Filming, video, social media MOLE Digital
- Lead retrieval [fielddrive](#)



## For the Italian pharma companies (for AIFA application)

Pharmaceutical company located in Italy and sponsor in an international congress event on topics related to the use of their own pharmaceutical products, must submit to the competent Unit of the Italian Medicines Agency (AIFA) their application to obtain a specific authorization. This is in respect of an Italian Government Decree (Decreto Legislativo 219/06 art. 124).

Please find more information [here >>>](#).





## Conference venue

### MESSE & CONGRESS CENTRUM BREMEN

Entrance Hall 4

28215 Bremen, Germany

General information about the venue: <https://congress-bremen.com/en/>

E-mail: [technik@pflege-wundkongress.de](mailto:technik@pflege-wundkongress.de)

### Virtual tool

With a 360° view, you can explore the spaces and the building floor by floor. Visit Congress Bremen virtual [here>>>](#).

## Messe Bremen Webshop

Please find all practical information, rules, and specifications on the webshop, where you can see prices and place orders for the following services:

- Shell scheme packages
- Stand constructions
- Stand construction approval
- Stand equipment
- Furniture
- Printing
- Electrical installation
- Water installation
- Internet
- Plants & flowers
- Requests for ceiling suspensions
- Requests for compressed air connections
- Catering
- Displays and mounts
- Stand cleaning
- Waste disposal
- Stand security
- Fire prevention
- Parking
- Extension of set-up and dismantling times

### Deadline:

- All orders to be submitted by **3 March, 2026**.
  - The prices for the services requested after 3 March will increase by 25%: **by 15 April, 2026**.
  - The prices for the services requested after 15 April will increase by 50%: **by 10 May, 2026**.
- You can also find FAQs and guidelines on the webshop.

Contact information will be available after you create an account and log in to the webshop.

For technical services at Messe Bremen, please reach out to this email address: [technik@pflege-wundkongress.de](mailto:technik@pflege-wundkongress.de).





Messe Bremen will send out an information e-mail with a direct link to their [Webshop](#):

**Subject:** Information on the Exhibition – EWMA-DEWU 2026

Dear Exhibitor,

We are delighted to welcome you at the **36th Conference of the European Wound Management Association (EWMA)** in cooperation with the **German Wound Congress (DEWU)**, taking place from **6–8 May 2026** in **Bremen, Germany!**

[Attached you will find the current floor plan of the exhibition in Hall 5 of MESSE BREMEN.](#)

[You can locate your stand under the following stand number:](#)

«Firma» - «Standnummer»

**Webshop - Online Service Centre (OSC).**

Technical services and equipment such as stand construction, monitors, stand items and decorations can be ordered via the **Online Service Centre (OSC)**.

Please note that all orders must be placed **by 1 March 2026**.

After this date, orders can only be accepted to a limited extent and will be subject to a surcharge.

To log in to the webshop, please enter your stand number in the pop-up window.

**Link to OSC:** [\[Click here\]](#)

**Important information:**

- **Power supply:** Electricity must be ordered in advance. On-site orders are **not possible**.
- **Floor covering:** We recommend ordering carpet in the color of your choice. We look forward to a successful event together and remain at your disposal for any questions.

Kind regards,

Organizing Team EWMA-DEWU 2026

### [Shell scheme packages](#)

Orders for Shell Schemes must be placed directly through [Messe Bremen Webshop](#), where you also find detailed information about the various options, content, and prices.



## Exhibitor General Regulations

Please find detailed information on the [Messe Bremen Webshop](#).

## Ethical guidelines for exhibitors at EWMA

- Presentation within the booth area must not disturb the neighbouring stands. Speakers must point toward the stand and must not be placed in the aisle area.
- Stand entertainment must be approved by EWMA ([industry@ewma.org](mailto:industry@ewma.org))
- Is it not permitted for people from other companies to ask questions during company sponsored symposia – especially when their affiliation is not disclosed.
- No one should approach a competitor's booth without disclosing their company affiliation.
- Materials should only be handed out in the exhibition area, not in the scientific area.
- Mystery buyers are not allowed.
- Dismantling of the booths should not begin until after the last coffee break on Friday afternoon. Booths may be emptied but not packed away before the official dismantling time (15:00).
- All company staff at the booths should know these rules.

## Deliveries

All shipments and deliveries to the conference venue Messe Bremen must be shipped using the official logistics partner [DSV](#).

## Building height

Regardless of the planned construction height, the current legal regulations and the **Technical Guidelines** of MESSE BREMEN apply in all cases.

The stand construction regulations can be found in the Technical Guidelines of MESSE BREMEN in the webshop, under "Guidelines": [Messe Bremen Webshop](#).

The standard height for stand structures and advertising materials is 3 m.

The maximum construction heights for stand structures are **5.0 meters**.



## Approval of stand construction and design

All stands that exceed the standard height of **3 meters**, stand structures with truss constructions, special structures or special constructions (e.g. closed stand ceilings, walkways, stage areas, auditoriums, etc.), two-storey stand structures, and structures in the outdoor area are subject to approval.

### Stand approval procedure

Exhibitors who have booked a space only stand must send stand construction and design for approval.

1. Apply for stand design approval via the [Messe Bremen Webshop](#).

**EWMA 2026** **DEWU 2026**  
DEUTSCHER WUNDKONGRESS

**EWMA-DEWU 2026**  
Wednesday, 6 May 2026 - Friday, 8 May 2026

Deadlines

Deadline  
Due until: Tue, 3 Mar 2026

25% surcharge (the prices shown include the surcharge)  
Due until: Wed, 15 Apr 2026

50% surcharge (the prices shown include the surcharge)  
Due until: Sun, 10 May 2026

Popular items

Overview of important dates

Technical Stand Installation

Stand Construction & Equipment

Additional Services

Approval of stand construction

Prolonged set-up & dismantling

APPROVAL OF STAND CONSTRUCTION

All stands that exceed the standard height of 3 meters, stand structures with truss constructions, special structures or special constructions (e.g. closed stand ceilings, walkways, stage areas, auditoriums, etc.), two-storey stand structures and structures in the outdoor area are subject to approval. Regardless of the planned construction height, the current legal regulations and the **Technical Guidelines** of MESSE BREMEN apply in all cases.

Assuming that the laws and conditions stated here are complied with in the design and construction of the exhibition stand, it is **not necessary to apply for a stand construction permit for stands up to 3 meters in height**.

Stand ceilings: Halls 4.01, 4.1 and the foyers of Halls 4 to 6 are equipped with sprinkler systems. In these rooms, 50% of each m<sup>2</sup> of all stand ceilings must be open vertically, otherwise the areas below must be sprinklered. More information can be found in the **Technical Guidelines**, Section 4.4.2.

Using or hiring elevated work platforms is reserved exclusively for M3B contracted freight forwarder. The use of externally rented aerial work platforms is strictly prohibited on M3B's premises.

Own crank lifts may be used on M3B premises provided they have a current inspection including a sticker, documentation can be presented upon request, and all work and safety regulations are observed.

€0.00

2. Messe Bremen replies direct to the exhibition with comments or confirmation to the stand design.

**Please note:** In case a stand construction and design has not been approved by Messe Bremen prior to the conference, the exhibiting company will not be allowed access for build-up.

**Deadline:** 1 April 2026

The regulations can be found in the Messe Bremen webshop under "Approval of stand construction.": [Messe Bremen Webshop](#).

## Stand building regulations

Exhibition stands, fixtures and fittings, exhibits and advertising media must be constructed to ensure structural stability and safety, to prevent any danger to public safety, order, and life and health in particular. Exhibitors are responsible for static safety and may be required to provide proof of this.

The **stand construction regulations** can be found in the Technical Guidelines of MESSE BREMEN in the webshop, under "Guidelines": [Messe Bremen Webshop](#).



**Please note:** Back walls higher than 3 meters must be covered with constructed panels, which should be painted white. Curtains and drapes are not permitted. Electrical cables must not be visible and must be properly concealed.



## Contractor's access

Stand constructors can access the exhibition areas during build-up and dismantling hours. Information on how to access during build-up and dismantling hours will follow shortly.



## Rules and Regulations – advertising

### Advertising activities

Advertising activities may only be carried out, only on the exhibitor's stand. Adequate space must be available on the stand for the spectators. Audio, visual and other means of advertising must not cause obstructions or interference in the aisles or to neighbouring stands. The noise level caused by advertising and exhibits must not exceed 60dB (A) at the stand boundary. Gases and vapours may not be used. Flashing signs and illuminated message panels (newscasters) must be authorized, before being used. Balloons filled with non-flammable gas are permitted, as long as the approved building standards are being adhered to.

### Advertising in the exhibition area

Exhibitors can use the delimited stand wall space for advertising purposes. Unauthorized display of company material outside the stand is prohibited and will be charged. Advertisement and distribution of advertising material outside of the exhibition area or by symposia rooms of other companies is not permitted. Unauthorized advertising may be removed by the organizers. Exhibition management can demand that all presentations be stopped immediately in case of justified complaints. The management decides in cases of dispute as to whether or not certain advertising is permissible.

## Branding possibilities

Please see our branding catalogue for possibilities [here>>>](#).

For booking, please contact the EWMA Industry team directly at [industry@ewma.org](mailto:industry@ewma.org).



## Symposium information

If you are hosting a symposium, please provide your symposia information, which will be featured in the EWMA-DEWU 2026 online programme and the EWMA-DEWU 2026 app:

1. Symposium title
2. Date, time slot
3. Symposium title
4. Short symposium description (if any) to be shown in the online programme
5. Speaker names, affiliations, and email addresses
6. Chair name, affiliation, and email address.
7. Speaker topics
8. Pictures of your speaker(s) and chair(s), if you wish to have these displayed in the online programme and App

Please provide your symposium information by filling out the online form [here >>>](#).

**Please note:** A speaker can be engaged with no more than two companies for their industry symposium. Therefore, we recommend that you check with your speaker to confirm whether they are already engaged in an EWMA session or with another company.

**Deadline:** 31 January, 2026

### Simultaneous translation

If you would like to add simultaneous translation for the Industry Symposia, you can choose from the following options:

- Simultaneous translation from English to German
- Simultaneous translation from German to English

Please note that the A-Symposia price includes simultaneous translation service.

For other Industry Symposia, translation (Setup, Headsets, Translation) can be booked at an additional cost.

**Deadline:** 31 January, 2026

### Speakers' information

Speakers may collaborate with up to two companies for an industry symposium. All speakers must be registered for the conference.

It is the speaker's responsibility to inform any company that contacts them if they are already engaged with other companies for the conference. However, we also recommend that companies check with the speaker to ensure they do not have commitments with any other companies.

### Promotion

Mascots are restricted to the exhibition area. Mascots are allowed to hand out promotional materials in the exhibition space and when walking through the exhibition hall.

1 company roll-up can be placed by the entrance to the symposium room 30 minutes prior to your symposium.



## E-mail blast

As part of your booking of A- or B-Symposia, you have the opportunity to send a promotional email blast to delegates before your symposium. We expect around 7,000+ delegates in total.

**Recipients:** All registered delegates as of the mailing day.

### Content:

- **The content of the E-Blast is subject to approval and must comply with all applicable ethical and industry standards, including the compliance criteria defined by Ethical MedTech Europe.**
- Please provide the text for the subject line. The standard text for the preview line is: EWMA: Industry Sponsored Symposium – Company Name.
- The content must include the EWMA conference banner either at the top or at the bottom.
- **Content Submission:** A ZIP folder containing your HTML email template, and the images used in it. Images should not exceed 200 KB in size.
- **Submission Method:** Please send your materials via [WeTransfer](#).
- **Deadline:** 2 weeks before the mailing day. A reminder will be sent one week before the material submission deadline.
- **Mailing Day:** Subject to availability, scheduled upon request.

E-blasts are limited to one per day and are allocated on a first-come, first-served basis.

The email blast will be sent daily during the week leading up to the conference and will continue until the last day of the event.

Please contact us at [industry@ewma.org](mailto:industry@ewma.org) for availability and booking.

**Price:** €2,000

## Symposium presentation instructions

You find presentation instructions [here >>>](#).

## Catering for symposia

Must be ordered via [Messe Bremen Webshop](#).

Further information will be provided shortly.



## Exhibitor registration

### Exhibitor badges

The exhibitor badges are only for the personnel taking care of the exhibition stand. Included in the exhibition space is 1 free exhibitor badge for every 4.5 sqm, i.e.:

Stand area, sq. m	Total badges	Stand area, sq. m	Total badges	Stand area, sq. m	Total badges
9	2	40-44	9	72-75	16
12-15	3	45-49	10	76-79	17
16-22	4	50-53	11	80-84	18
23-24	5	54-57	12	85-89	19
25-29	6	58-62	13	90-93	20
30-34	7	63-66	14	94-98	21
35-39	8	67-71	15	99-102	22

### Registration terms and regulations

These terms and regulations are for you, as an exhibiting company, to ensure all registration formalities are met prior to the conference.

### Stand personnel

- All stand personnel must always be registered and wear official badges.
- Due to security reasons, stand personnel must be registered **prior** to the conference.
- All badges are personal and cannot be shared due to security regulations.
- Exhibitors have a min. of 2 exhibitor badges for stand personnel included in exhibition space rental.
- The max. number of additional exhibitor badges is equal to the number of free exhibitors included in the booked exhibition space. Excess personnel must be registered as a participant.

### Access to the exhibition area outside opening hours

- To access the exhibition outside opening hours, you need a yellow sticker on your exhibitor badge. The exhibiting company must provide a name list prior to the conference with the names of those that require access.
- **Deadline: 1 April, 2026**
- The sticker must be added to your badge at the exhibitor service desk if we have received the name list. No sticker will be given to exhibitors, not included in the list.

### General Terms

- All invoices related to exhibitor registrations must be settled by **29 April, 2026**.
- No badges can be printed onsite if payment is missing. In such cases they must be settled by credit card (Visa or Mastercard) or cash onsite.
- Name changes are **ONLY** possible when made no later than **22 April, 2026**. A handling fee of **€25** will be charged for all name changes. **No name changes are possible on site.**
- For security reasons, all badges are strictly personal and must be worn visibly at all times. The EWMA secretariat will confiscate any badges that are misused, and the personnel will have to purchase and pay for a new badge on site.

EWMA 2025 is registered for VAT in Germany. Registration fees will be charged in the local currency EUR, and include 19 % VAT. Please make sure you enter the correct VAT number if your registration fee is covered by your institute or a company. If your invoice is to be paid by yourself as a private person, you can enter N/A in the VAT field.

Please note: All registration fees will be charged in EUR incl. VAT. It is required by local authorities that we charge local VAT, and invoices cannot be issued without VAT, reverse charge mechanism does not apply.



## FREE EXHIBITOR ACCESS

- Please see the exact number on your stand in the table on the previous page.
- An exhibitor badge gives access to the exhibition area during
  - build-up
  - exhibition hours and half an hour prior to/after the exhibition hour
  - dismantling
- an exhibitor badge does not give access to the scientific sessions.
- Registration for further stand personal after deadline, will be charged at the additional cost.

## ADDITIONAL EXHIBITOR REGISTRATION

- **Price:**
  - Before 19 March, 2026: €155 excl. VAT (185 incl. VAT)
  - On or after 19 March 3, 2026: €300 excl. VAT (357 incl. VAT)

## SUPPLIER BADGE - DEADLINE 15 APRIL, 2026

- Companies requiring badges for suppliers during the conference, i.e.: mascot, barista, model, hostess, technician (light/sound etc.)
- 2 supplier badges are incl. for free in A and B sponsorships
- Max. 2 badges per stand.
- The supplier badge is *not* personal and can be shared by different suppliers during the conference.
- **Price:** €50 incl. VAT.
- Request supplier badge by contacting [registration@ewma.org](mailto:registration@ewma.org).

## SPONSOR REGISTRATION - DEADLINE 15 APRIL, 2026

- Participant registrations are included in corporate sponsor packages.
  - A-sponsors have 8 registrations incl.
  - B-sponsors have 2 registrations incl.
- A Participant registration gives access to the scientific sessions and the exhibition area during opening hours

## DEADLINE FOR REGISTRATION: 15 APRIL, 2026

- **No on-site free exhibitor registration. Please ensure you complete your registration online before the deadline.**
- On-site registrations are according to the general EWMA participant fees. <https://ewma.org/ewma2026/registration/>
- On-site registrations cannot be invoiced and must be paid on-site by credit card.



## Registration guide

Registrations must be made through the online registration system.

It is a 6-step process, according to the guidelines for *stand personnel and free participant registrations* below.

To start the registration process, you need to create an account. The system will recognize your email if an account already exists in the system. You can reset your password if you have forgotten it.

**IMPORTANT:** Do not use fake e-mail accounts as important information, QR code vouchers for name badges etc. will be sent to the e-mail address of each participant.

**IMPORTANT:** Do not create accounts for other persons using your e-mail address. You can log in with your account and then register up to 5 participants within 1 order for the conference, using their own email address and details.

[REGISTER HERE](#)

*We recommend using Firefox or Google Chrome as the registration system works better in these browsers.*

Once you are logged in to the registration click the module **Individual Registration** and follow the guidelines below.

### Guide for Exhibitor Stand Personnel

This guide is for registration of staff on your stand only. Stand personnel wishing to attend the scientific sessions must register as participants or use sponsor registration if any.

1. Choose to register yourself or others.
2. Choose the participant type **"g) Exhibitor Stand Personnel"** and enter your exhibition company name.
3. Add registration option (incl. or additional registrations). Proceed to finalize your registration.
4. You will now be able to register further participants if needed or proceed to finalize your registration.
5. When the payment step is completed, you will see a summary of your registration(s). Confirm your registration by clicking the "Finish registration" button.
6. Confirmation of the registration process will create an automated email confirmation.  
*Please check your SPAM filter if you do not receive it in your regular inbox.*

### Guide for Sponsor registration (incl. in sponsor package)

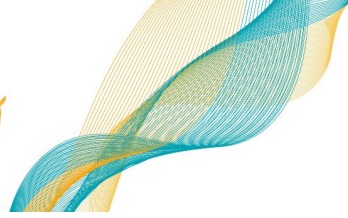
This guide is for sponsor registrations with full access to scientific sessions included in a sponsor package.

1. Choose to register yourself or others.
2. Choose the participant type **"h) Sponsor registration"** and enter your sponsor company name.
3. Add registration option and proceed to finalize your registration.
4. You will now be able to register further participants if needed or proceed to finalize your registration.
5. When the payment step is completed, you will see a summary of your registration(s). Confirm your registration by clicking the "Finish registration" button.
6. Confirmation of the registration process will create an automated email confirmation.  
*Please check your SPAM filter if you do not receive it in your regular inbox.*

### Deadline for all registrations: 15 April 2026

A surcharge of €50 incl. VAT will occur on all registrations after the deadline.

Please contact the EWMA registration team at [registration@ewma.org](mailto:registration@ewma.org) if you have any questions.



## External suppliers

### Official hotel accommodation agent - Codan Consulting



Codan Consulting has been appointed as the official hotel accommodation agent for the conference on 6-8 May 2026 in Bremen, Germany, and will handle all related arrangements.

Hotel rooms of different categories at reduced rates will be available for all participants via the booking website [here>>>](#).

Hotel accommodations are booked on a first come, first serve basis.

### Contact information

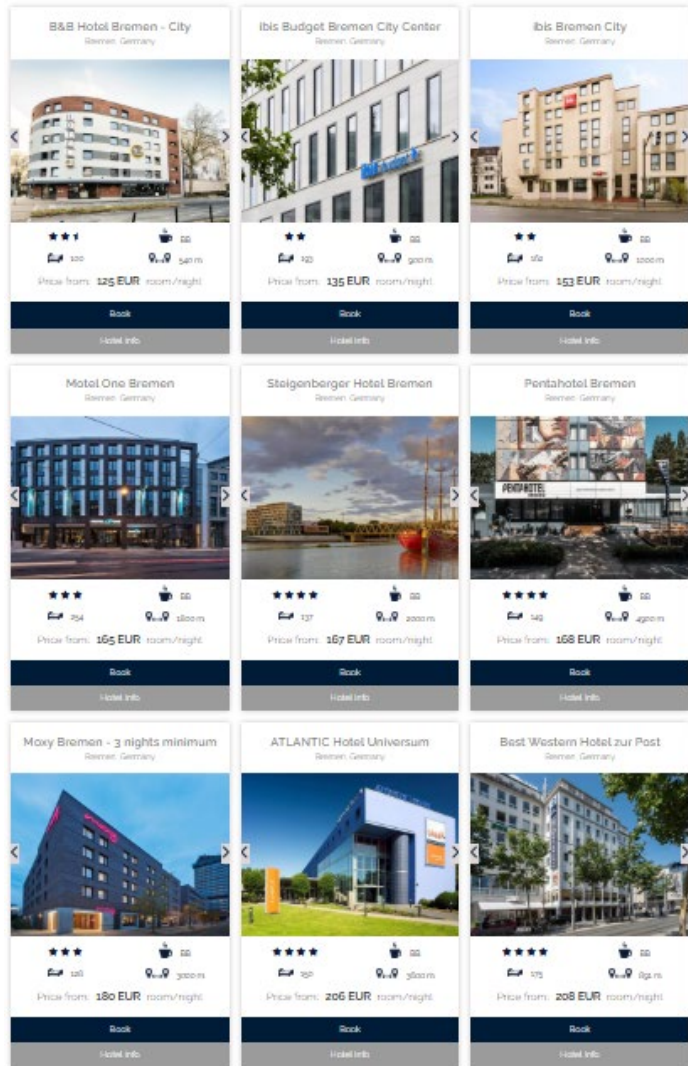
#### Codan Consulting

Provaznická 11  
110 00, Prague 1  
Czech Republic

Telephone: +420 601 026 251

Email: [ewma@codan-consulting.com](mailto:ewma@codan-consulting.com)

Contacts: Veronika Hofmanova & Jitka Langova





Official logistics partner - DSV



**Kindly note: all shipments and deliveries to the conference venue Messe Bremen must be shipped using the official logistics partner DSV.**

DSV is the appointed official partner for EWMA-DEWU 2026

- DSV have extensive experience in handling logistics for exhibitions and events globally
- DSV offers a full one-stop shop for your logistics solution from your premises in Europe to your stand plus return post conference
- DSV are onsite to assist you with any extra logistics requirements you have at the conference
- DSV have a global network of dedicated logistics professionals via our own offices and partners. They will work with you locally, in your own country, to help you with your logistics requirements, establishing cost effective and robust transport and handling solutions

**Exhibition Service**

- transport, handling, storage etc.

The following information is available at the EWMA-DEWU 2026 homepage [here>>>](#).

- Conditions
- Shipping instructions
- Shipping labels

All bookings must be made by the **29th of April**.

Any booking after this date will incur a late booking surcharge. All bookings to be sent to [expo@dk.dsv.com](mailto:expo@dk.dsv.com).



**Contact information:**

**DSV**

Center Boulevard 8  
2300 Copenhagen S  
Denmark

Tel.: + 45 43 20 38 53

E-mail: [expo@dk.dsv.com](mailto:expo@dk.dsv.com)

Contact person: Henrik Glendorf



## Show Ready Stand solution by GES

For exhibitors, with a space only stand, but do not wish to self-build.

Why juggle the stress of building a stand from scratch when you can *arrive and shine* with a **Show-Ready Stand solution**?

Our expert partners design, deliver, and install **pre-built, high-performance stands**—so you walk in to a fully powered, polished, and professional space that’s ready to impress.

### You can choose from two categories:

- Versatile solutions (12+ solutions)
- The Edit – premium stand solutions (30+ sqm)

### Your stand in just 3 easy steps:

1. Pick your design
2. Select your enhancements
3. Upload your artwork

That’s it. When you arrive, your stand is waiting—powered up, branded, and built to wow.

### Why choose a Show-Ready Stand solution?

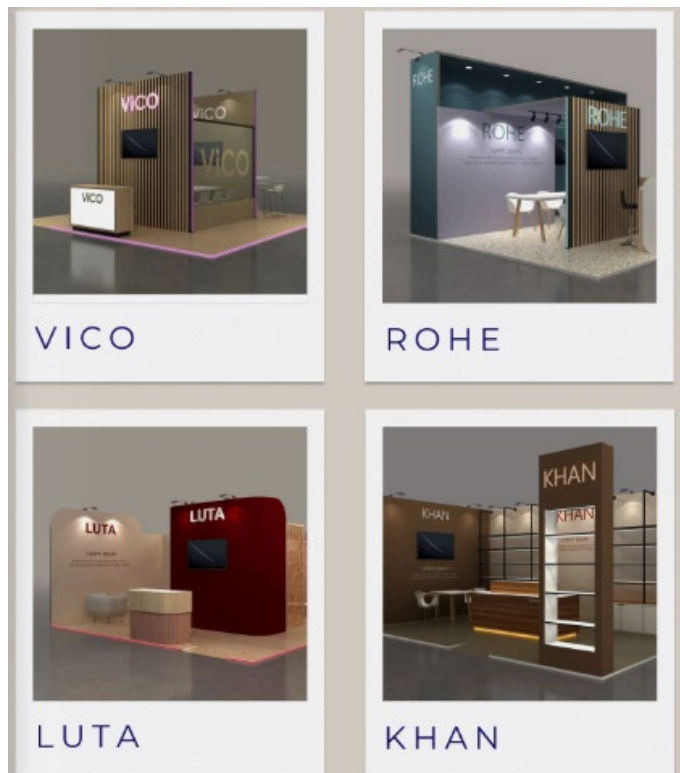
- **Save time & stress:** No messy build, no delays, no last-minute chaos. Step in and focus 100% on your visitors and leads.
- **Stand out instantly:** Premium finishes and bold branding ensure you don’t just blend in—you *own the space*.
- **Eco-smart choice:** Built with low-waste, reusable materials to keep your stand (and your brand) aligned with greener event standards.
- **Big impact, smart budget:** Get the look and performance of a custom build—without blowing your budget.
- **Complete peace of mind:** From logistics to setup to teardown, everything is handled for you. You just show up and shine.

Click here for more information and the order form:  
[stand solutions by GES >>>](#)

**Deadline:** 1 March, 2026

### Contact information

E-mail: [showready@ges.com](mailto:showready@ges.com)





## Customized Stand Builder - Spiro

Spiro specializes in custom exhibits designed to stop traffic, spark conversations, and showcase your brand at its boldest.

With the industry's broadest in-house capabilities, we deliver experiences that are seamless, cost-efficient, and built to capture attention on the show floor.

From cutting-edge fabrication to immersive technology, we bring every detail together under one roof—ensuring quality, speed, and consistency wherever you exhibit. With Spiro, you get flexible design options matching your vision and your budget.



**There are several benefits in choosing to work with Spiro, some of which are:**

- On-site production and team to support with all service offerings
- Experienced onsite delivery team with support throughout the entire event
- Full concierge service for the planning, installation, and breakdown of your stand build
- Decades of sustainability leadership in the live event industry

Please contact the supplier if you require an external stand builder or have any further questions.

**Contact information:**

E-mail: [ewmastandbuild@ges.com](mailto:ewmastandbuild@ges.com)

Contact person: Angela Roberts

**Deadline:** 1 March 2026

**EWMA 2026**

**DEUTSCHER  
WUNDKONGRESS**

 **WundD-A-CH**



 **CONGRESS  
BREMEN**



**6 - 8 MAY 2026 | BREMEN, GERMANY**



## Official lead retrieval - fielddrive Leads

### An improved way to collect leads at EWMA-DEWU 2026

Here's how it will transform your event success:

- User friendly design for faster and smoother exhibitor experience
- Works seamlessly both online & offline
- Fully customisable lead qualification questions
- Quick and easy access to lead reports and visitor data directly from the app
- Immediate follow-up, with digital content distribution on the fly
- Leaner, more value-rich reports containing only the most relevant visitor data to enhance lead qualifications
- Intuitive UI design with self-onboarding to offer
- streamlined and smooth user experiences.



### Pricing information

#### Exhibition Stand Scanning

Purchase an app license to use with your own smartphone.

- Early bird license price: €240 if purchased by 27 March
- Standard price: €290 from 28 March

#### For additional licenses, the price is as follows:

- Early Bird Price: €120 per additional license
- Standard Price: €150 per additional license

Visit the fielddrive Leads webshop to place your order. Please find the link here: [EWMA 2026 Lead Retrieval - EWMA](#)

#### Symposium Visitor Scanning

##### 1. Using a Scanner (Recommended for the best efficiency and speed):

The symposia scanning package includes:

- two rented scanner devices
- pre-installed app on both devices
- Price: €650

It can only be used for Symposium Scanning. Please note that you will be asked to return the scanners after the symposium. You will receive the leads for downloading the same day.

Please complete the [Symposia Scanning Order Form](#) below to order your symposium scanner device.

##### 2. Using your own phone

- Early Bird License Price: €240 (if purchased by 27 March)
- Standard License Price: €290 (from 28 March)

#### For additional licenses, the prices are as follows:

- Early Bird Price: €120 per additional license
- Standard Price: €150 per additional license

More details can be found on the EWMA homepage here: [EWMA 2026 Lead Retrieval - EWMA](#)



## Mole Digital - Filming, video, and social media



- **Symposium filming**  
Video coverage of your symposium, presented in full with integrated slides for a complete educational package.
- **Exhibition highlights**  
Web- and social media-ready highlights video of your EWMA-DEWU 2026 exhibition presence.
- **KOL interview**  
Expert Q&A - cover key topics, presentation highlights or create clinical briefings.
- **Digital marketing and social media**  
Pre-, during and post-event social media images, videos, and posting; digital marketing campaign planning and delivery
- **Digital signage and presentations**  
Videos for presentation and your exhibition stand screens, including product demonstrations, medical animation, and patient case studies

### Deadlines:

Filming (symposium and/or conference highlights): **6 April**

Please contact Tim at MOLE directly for ordering:

### Contact information:

#### Company address

#### Mole Productions Ltd

The Grain Store, Manor Farmyard, Coate, Wiltshire, SN10 3LP, UK

Website: <http://www.moledigital.co.uk>

Tel.: +44 (0) 1380 718170

E-mail: [info@moledigital.co.uk](mailto:info@moledigital.co.uk)



## Overview of deadlines:

All information, order forms, rules, and regulations are to be found on the EWMA-DEWU 2026 [“Plan Your Exhibition”](#) homepage. We will update the information accordingly.

Date	Subject	Supplier	Topic
31 January	Exhibitor directory	EWMA	<a href="#">Provide information</a>
31 January	Symposium information	EWMA	<a href="#">Provide information</a>
1 March	<a href="#">Show ready stand solution</a>	GES	<a href="#">Order form</a>
1 March	<a href="#">Customized Stand Builder</a>	Spiro	Order
3 March	Shell scheme package	Messe Bremen	<a href="#">webshop</a>
3 March	Shell scheme extras	Messe Bremen	<a href="#">webshop</a>
3 March	Floor Covering	Messe Bremen	<a href="#">webshop</a>
3 March	Electrical	Messe Bremen	<a href="#">webshop</a>
3 March	Furniture	Messe Bremen	<a href="#">webshop</a>
3 March	Stand Services	Messe Bremen	<a href="#">webshop</a>
3 March	IT/Tech. solutions	Messe Bremen	<a href="#">webshop</a>
3 March	Stand cleaning	Messe Bremen	<a href="#">webshop</a>
3 March	Piped services	Messe Bremen	<a href="#">webshop</a>
3 March	Stand catering service	Messe Bremen	<a href="#">webshop</a>
3 March	Rigging	Messe Bremen	<a href="#">webshop</a>
3 March	Graphics	Messe Bremen	<a href="#">webshop</a>
19 March	<a href="#">Registration – early bird</a>	EWMA	Additional exhibitors (€155 excl. VAT)
27 March	Early bird	fielddrive Leads	<a href="#">Order</a>
27 March	Symposia/Workshop Lead retrieval	fielddrive Leads	<a href="#">Order</a>
1 April	Stand approval	Messe Bremen	<a href="#">Stand build regulations</a>
6 April	<a href="#">Symposium filming</a>	Mole Digital	Symposium
6 April	<a href="#">Stand or conference filming</a>	Mole Digital	Conference highlights
15 April	<a href="#">Registration</a>	EWMA	Free exhibitors
15 April	<a href="#">Registration</a>	EWMA	Free Sponsor participants
15 April	<a href="#">Registration</a>	EWMA	Group registration
15 April	<a href="#">Registration</a>	EWMA	Supplier badges
22 April	<a href="#">Registration</a>	EWMA	Name changes (€25 fee)
29 April	<a href="#">Shipping</a>	DSV	Stand material