



POSITION DOCUMENT



Hard-to-heal wounds: a holistic approach

Wound complexity and healing

Psychosocial factors and delayed healing

Economic burden of hard-to-heal wounds

MANAGING EDITOR

Suzie Calne

SENIOR EDITORIAL ADVISORS

Christine Moffatt

Professor and Co-director, Centre for Research and Implementation of Clinical Practice (CRICP), Faculty of Health and Social Sciences, Thames Valley University, London, UK

Peter Vowden

Visiting Professor of Wound Healing, University of Bradford, and Consultant Vascular Surgeon, Bradford Teaching Hospitals NHS Foundation Trust, Bradford, UK

EDITORIAL ADVISORS

Matthias Augustin

Head of Health Economics and Quality of Life Research, Department of Dermatology, University Clinics of Hamburg, Germany

Aníbal Justiniano

General Surgeon and Invited Professor of Nursing, Santa Maria Superior Nursing School, Oporto Institute of Health Sciences, Portuguese Catholic University, Oporto, Portugal; President, APTFeridas

Christina Lindholm

Professor of Nursing, Department of Health Sciences, Kristianstad University, Sweden

David Margolis

Associate Professor of Dermatology, Department of Dermatology, University of Pennsylvania, Philadelphia, USA

Andrea Nelson

Reader in Wound Healing, School of Healthcare, University of Leeds, UK

Patricia Price

Director, Wound Healing Research Unit, School of Medicine, Cardiff University, UK

Marco Romanelli

Director, Wound Healing Research Unit, University of Pisa, Italy; President, European Wound Management Association

Javier Soldevilla Ágreda

Professor of Geriatric Care, EUE University of La Rioja, Logroño, Spain

Luc Téot

Assistant Professor of Surgery, Montpellier University Hospital, France

DESIGNER

Jane Walker

PRINTED BY

Viking Print Services, East Sussex, UK

FOREIGN EDITION TRANSLATIONS

RWS Group, Medical Translation Division, London, UK

PRODUCTION

Alison Pugh

DEPUTY EDITOR

Lisa MacGregor

EDITORIAL PROJECT MANAGER

Kathy Day

PUBLISHING DIRECTOR

Jane Jones

PUBLISHED BY MEDICAL EDUCATION PARTNERSHIP

Omnibus House, 39–41 North Road, London N7 9DP, UK

Tel: +44 (0)20 7715 0390 Email: info@mepltd.co.uk Web: www.mepltd.co.uk

EUROPEAN WOUND MANAGEMENT ASSOCIATION

Secretariat: PO Box 864, London SE1 8TT, UK

Tel: +44 (0)20 7848 3496 Web: www.ewma.org

Sponsored by an educational grant from KCI Europe Holding BV.



The comments and views expressed are those of the authors only and do not necessarily reflect those of KCI. "V.A.C.® Therapy" referred to in this document is a KCI product, and all such trademarks designated herein are the property of KCI Licensing, Inc.



All rights reserved. No reproduction, copy or transmission of this publication may be made without written permission. No paragraph of this publication may be reproduced, copied or transmitted save with written permission or in accordance with the provisions of the Copyright, Designs & Patents Act 1988 or under the terms of any license permitting limited copying issued by the Copyright Licensing Agency, 90 Tottenham Court Road, London W1P 0LP.

To reference this document cite the following:

European Wound Management Association (EWMA). Position Document: *Hard-to-heal wounds: a holistic approach*. London: MEP Ltd, 2008.

Hard-to-heal wounds: a holistic approach

C Moffatt¹, P Vowden²

*It is noted that 'hard-to-heal' and 'wound complexity' are broad terms and are open to different interpretations'. This document explores these concepts from a practical perspective.

1. Meame S. Plaies difficiles: de la physiologie à la pratique. *Le Quotidien du Médecin* 16 Novembre 2007; 8258 (FMC Spécialistes): 1-23.

Even with increasing knowledge and the development of more sophisticated interventions, many clinicians will encounter wounds that are 'hard-to-heal' where, despite best efforts, wound healing is prolonged or never achieved. This often causes increased psychological stress and anxiety for all involved and creates a considerable financial burden for already hard-pressed healthcare systems.

While some attention has been placed on understanding the biological factors influencing delayed healing, relatively little has been placed on the psychosocial factors involved. This document aims to redress this balance and looks at how all of these factors may have an impact on healing and affect a patient's life.

In the first paper, *Wound complexity and healing**, Vowden, Apelqvist and Moffatt identify issues that affect wound healing. They bring together the practical aspects of dealing with wounds and the increasing scientific data that demonstrate why some wounds fail to heal. The authors describe how physical, bacteriological and biochemical wound- and patient-related factors can be used to give an indication of risk for delayed healing. The paper sets out a framework showing how the patient, the patient's wound, the skills and knowledge of the healthcare professional, and resource availability interact to define wound complexity, and how this relates to potential problems with healing. The paper also introduces the importance of psychosocial factors and their impact on healing. In particular, a short patient commentary gives an insight into the psychosocial impact of a large non-healing wound and how the introduction of an advanced portable dressing system enabled the patient to return quickly to normal living and employment.

This theme continues in the second article *Psychosocial factors and delayed healing* by Moffatt, Vowden, Price and Vowden, which explores the close interrelationship between anxiety and depression, sleep deprivation, socioeconomic status, wounding and non-healing.

Although the main focus of both papers is the patient, it is important to recognise that non-healing also impacts directly on healthcare professionals who are under increasing pressure to justify their actions in terms of cost-effectiveness and clinical outcomes.

The third paper, *Economic burden of hard-to-heal wounds* by Romanelli, Vuerstaek, Rogers, Armstrong and Apelqvist, examines the potential cost implications of hard-to-heal wounds in different countries. The significant economic burden of these complex wounds relates mainly to extended time to healing and to associated complications. Management of wounds should therefore focus on identifying problems early and using appropriate strategies and interventions to facilitate healing and to avoid complications. This may, however, require the use of apparently more expensive interventions. Clinicians will need to adopt a broad view of total resource use, rather than focusing on acquisition costs alone, in order to present robust economic arguments to fund holders. However, a problem in evaluating the cost of disease states is the wide variation in the cost criteria used by different studies.

Although the themes covered in this document are equally relevant to all practitioners, problems specific to wound complexity and delayed healing will be greatly influenced by individual circumstances such as product availability, the reimbursement system and the care setting.

The challenge for clinicians is to recognise and take the appropriate measures to simplify or downgrade the complexity of the wound so that it can heal in the least invasive setting, in the shortest time possible and without negatively impacting on the patient's quality of life. Early recognition of a wound that is slow to heal is very important and should trigger a reappraisal of the treatment plan. Professionals may need to look for alternative treatment strategies. In some situations, the goal of treatment may change to effective symptom control, ensuring the patient has the best possible quality of life despite the presence of a wound.

1. Professor and Co-director, CRICP, Faculty of Health and Social Sciences, Thames Valley University, London, UK.

2. Visiting Professor of Wound Healing, University of Bradford, and Consultant Vascular Surgeon, Bradford Teaching Hospitals NHS Foundation Trust, Bradford, UK.

Wound complexity and healing

P Vowden¹, J Apelqvist², C Moffatt³

INTRODUCTION

Over the past 20 years there have been major advances in our understanding of the biology of wound healing. This means that it is now possible to predict the likely sequence of events in the healing trajectory and to forecast the approximate time it will take for a wound to close completely. However, despite our increasing knowledge and the development of many interactive wound care products, healthcare professionals will encounter wounds where healing is prolonged or never achieved. This paper suggests that the key to appropriate and effective management lies in recognising the complex combination of factors, both within and outside the wound, that are involved in the process of healing. Management can then focus on initiating appropriate measures to address any that are causing problems. The challenge is to identify as early as possible when a wound is slow to heal.

PREDICTING HEALING PROGRESSION

The importance of regular wound assessment and wound size measurement in identifying potentially hard-to-heal wounds has been reviewed by Troxler *et al*¹. Recognising early wound size reduction by measuring advancement of the wound edge (epithelial advancement) – the so-called ‘wound edge effect’ – has been shown to be a useful general measure of healing outcome in different wound types. Phillips *et al*², looking at percentage reduction in venous ulcer area, found that in approximately 77% of cases, healing outcomes could be predicted based on a wound size reduction of more than 44% at three weeks. Zimny and Pfohl have shown that weekly wound radius reduction could be used to predict healing in a group of patients with diabetic foot ulceration³. Margolis *et al*⁴ have successfully demonstrated that a simple scoring system for venous leg ulcers, based on ulcer size and duration, can give a good indication of the likely outcome at 24 weeks.

Epithelial advancement is, however, only one component of the healing process. Falanga *et al*⁵ incorporated measurement of epithelial advancement into a scoring system that correlates with the healing of venous leg ulcers. This system also examines other characteristics including the extent of periwound dermatitis, the presence of eschar, periwound callus and/or fibrosis, a pink/red wound bed and the amount of exudate and oedema.

WOUND COMPLEXITY AND HEALING PROGRESSION

The above predictors offer a useful guide and help to alert healthcare professionals to healing difficulties (ie that the wound is not progressing according to the projected time lines with standard therapy). However, the variability of healing rates among individuals⁶ and the many factors affecting this must also be recognised. Wound complexity will have a major impact on healing progression and the factors involved can be broadly categorised into four key groups:

- patient-related factors
- wound-related factors
- skill and knowledge of the healthcare professional
- resources and treatment-related factors.

Only by appreciating and understanding the interaction of these factors and their impact on healing (Figure 1) can clinicians develop effective and appropriate strategies to improve patient outcomes. The following sections discuss each of these categories in detail and explore how the factors involved may influence healing progress.

KEY POINTS

1. Clinicians should be encouraged to recognise, understand and address the factors that contribute to wound complexity as these may impact on healing progression.
2. It is important to identify as early as possible when a wound is likely to be slow and/or hard to heal
3. Interventions should be targeted at reducing all aspects of complexity, including those related to the patient, the wound, the healthcare professional and available resources.

1. Visiting Professor of Wound Healing, University of Bradford, and Consultant Vascular Surgeon, Bradford Teaching Hospitals NHS Foundation Trust, Bradford, UK. 2. Associate Professor for Diabetes and Endocrinology, University Hospital of Malmö, University of Lund, Malmö, Sweden. 3. Professor and Co-director, CRICP, Faculty of Health and Social Sciences, Thames Valley University, London, UK.

HARD-TO-HEAL WOUNDS: A HOLISTIC APPROACH

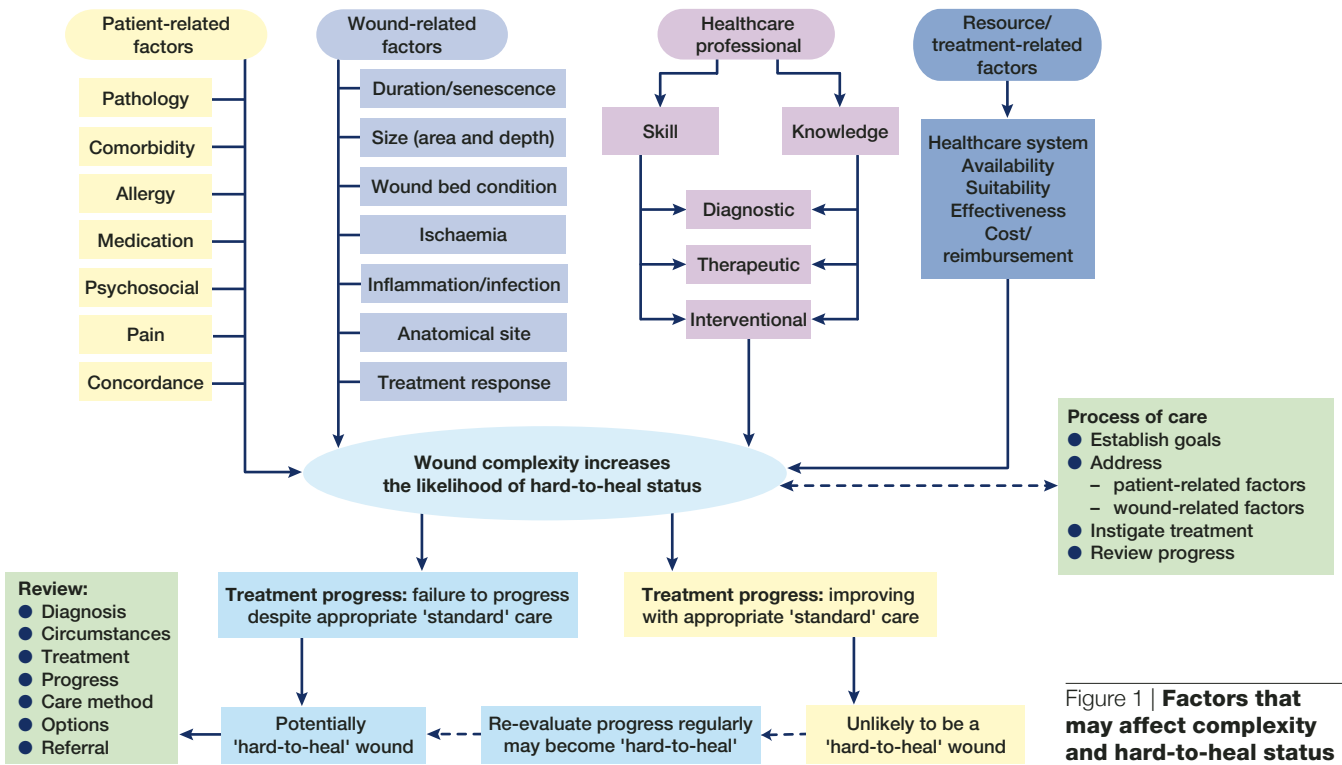


Figure 1 | Factors that may affect complexity and hard-to-heal status

PATIENT-RELATED FACTORS

Patient-related physical factors

The environment in which an individual patient’s wound exists is affected by a number of physical (such as underlying pathology, comorbidities, etc), psychological and social factors.

It has been shown that physical factors, such as diabetes mellitus, obesity, malnutrition, old age (over 60), decreased perfusion, peripheral vascular disease, malignancy, organ failure, sepsis, and even restrictions in mobility, have an impact on healing¹. Correcting, where possible, the underlying wound pathology and any comorbidities is, therefore, a central feature of wound management. If the underlying disease cannot be corrected or is difficult to manage, wound healing can be delayed.

Marston *et al*⁷ found that improved glycaemic control positively influences wound outcome in diabetic foot wounds, particularly when dermal substitutes are used. Similarly, it has long been recognised that restoration of pulsatile blood flow, by either surgery or angioplasty, markedly improves the outcome in ischaemic lower limb ulceration. This is in contrast to the situation in venous ulceration, where early surgical correction of superficial venous reflux has proved to be no more beneficial than high compression bandaging. The benefit of surgery here, as was demonstrated in the ESCHAR study, is in the reduction of ulcer recurrence in both the short- and the long-term⁸.

Diseases and treatments that directly affect the immune system have a major impact on wound healing and often increase the complexity of the wound^{9,10}. The inflammatory process is an integral part of acute wound healing, and derangement of this process is recognised as one of the primary causes of wound chronicity. Immunodeficiency states, the use of immunosuppressant drugs such as corticosteroids, azathioprine or methotrexate, or the presence of diseases (such as diabetes mellitus) that are known to affect the immuno-inflammatory response, all adversely affect healing and increase the risk of wound sepsis^{9,10}.

In addition, other patient-related factors, such as the wound care product used previously or drug sensitivity/allergy, may determine the complexity of the wound and the treatment outcome by restricting the range of suitable treatments (see Figure 1, page 3).

Patient-related psychosocial factors

Psychosocial factors, such as social isolation, gender, economic status¹¹⁻¹³ and pain experience, have also been found to influence healing (see Moffatt *et al*, pages 10–14). Recognition of the impact of these factors is seen as being particularly relevant when dealing with recalcitrant venous ulcers in an elderly population¹⁴. It is therefore important that appropriate referral is made (eg to social workers) so that the problems can be addressed effectively.

Stress and depression have been linked to changes in immune function, and may therefore adversely influence a broad range of physiological processes, including wound healing. In a human experimental model, it was found that stress and depression had a possible role in the modulation of matrix metalloproteinases (MMPs) and in the expression of tissue inhibitors of metalloproteinases (TIMPs)¹⁵. In a hostile marital environment, pro-inflammatory cytokines were found to be elevated and wound healing was delayed¹⁶.

Coping mechanisms

Patients with a chronic, non-healing wound will attempt to develop coping strategies¹⁷. The nature of their response will be determined by a variety of psychological factors: these include personality type (pessimistic or optimistic, for example), previous experience and psychological disorders such as depression, phobias and obsessive compulsive disorder.

Patient beliefs

Salaman and Harding¹⁸ investigated a group of 45 hospital patients with venous ulceration, 16 (36%) of whom were considered to be failing to make satisfactory progress. Only half of these 16 patients claimed to have received any explanation about the cause of their ulcer and the method of its treatment. Seventy-five per cent of the total group appeared to understand the importance of compression in ulcer healing, but 62% felt that it was not proving effective in healing their ulcer. Seven of the 16 patients with non-healing wounds (44%) believed their ulcer would heal.

Although the study was very small and focused on a mixed group of patients, 36% of whom were highly refractory, it raised important issues about the impact on wound healing of the patients' beliefs and their confidence in treatment. Further research is needed to understand patients' ability to tolerate and adhere to treatment modalities when they do not believe they will help them.

Concordance

Despite some patients feeling that they have no control over their situation, many do make attempts to ensure that the care they receive meets their own needs (Box 1, page 5). Some patients become experts in their own condition, often using the Internet to access information and frequently developing routines to ensure that their treatment plan matches their expectations¹⁹. In addition, patients may constantly take note of how their care is provided. Such patients use a form of coping called 'monitoring'.

Another form of coping is called 'blunting'; this is where patients appear unconcerned about their treatment and may not be greatly interested in their progress²⁰. Although blunting has been shown to be a useful coping strategy in acute situations, for patients with long-term conditions, it may lead to poor adherence to therapy and a refusal to engage in treatment²¹. Further research is required to confirm the long-term effects of blunting in patients with chronic wounds.

WOUND-RELATED FACTORS

In a study by Margolis *et al*, specific wound characteristics were shown to correlate with healing²². Patients with a large wound area, an ulcer of long duration, a reduced ankle-brachial pressure index or a visual estimate of fibrin on more than 50% of the wound surface had delayed venous ulcer wound healing at 24 weeks²². Other wound characteristics such as the condition of the wound bed and anatomical location may also impact on complexity and healing.

Wound duration and senescence

Wound duration is a recognised indicator for potentially delayed healing in a variety of wound types. This may relate to the development of a senescent cell population (ie a population of cells that is unable to replicate) in the wound. Henderson has reviewed the potential effect of fibroblast senescence on chronic wound healing, looking at the interrelationship of oxidative stress, pro-inflammatory cytokine generation and accelerated telomere degradation²³. The author concludes that although the chronic wound environment promotes senescence, not all cells are uniformly affected²³. The ratio of senescent to non-senescent fibroblasts has been linked to healing outcome: an accumulation of greater than 15% senescent fibroblasts has been described as a threshold beyond which wounds become hard to heal²⁴.

Size and depth

While studying venous leg ulcers, Margolis *et al* observed the importance of wound size and depth in determining healing outcomes for different wound types²². After using pooled data from almost 30,000 patients with diabetic foot ulcers, Margolis *et al* concluded in a series of papers that ulcer size (>2cm²), duration (>two months) and ulcer depth (penetration through to exposed tendon, ligament, bone or joint) were the three most important factors for predicting outcome. Patients with all three factors had only a 22% chance of healing by 20 weeks²⁵⁻²⁷.

Several classification systems for diabetic foot ulceration have been devised to allow risk stratification. One such validated system is the S(AD) SAD classification system – Size (Area and Depth), Sepsis, Arteriopathy and Denervation – which identifies ulcer size and the presence of arteriopathy as the most important factors associated with ulcer healing²⁸. In this system, lower grading is associated with more rapid healing. Kramer and Kearney²⁹ have also shown that the size and depth of pressure ulcers are good predictors for healing, ie the lower the ulcer grade the greater the chance of healing.

Owing to the physical nature of the healing process, it is inevitable that large wounds will take longer to heal than small ones. Furthermore, the longer a wound is open the greater the risk of complications such as infection. Treatments that reduce wound size and the risk of wound infection therefore offer potential benefits.

Wound bed condition

The presence of necrotic tissue in a wound has long been recognised as a barrier to assessment, as well as a potential factor for delayed healing and a locus for infection. The importance of regular debridement when managing diabetic foot ulceration was demonstrated by Steed – a chance

BOX 1. One patient's experience

I served for 25 years in the Royal Navy but had to leave after my entire colon was removed as a curative procedure. The resultant stoma, which affected my self image and resulted in a loss of income, proved a huge psychological shock.

One day I woke up with what I thought was a blocked stoma. After two operations, I was left with a very large wound. It was about 25cm long, 20cm wide and 6cm deep; you could see my intestines moving in the bottom of this hole and I could easily have put both my hands in it with room to spare. To cap it all, my diabetes became unstable and I was converted on the spot to an insulin injecting diabetic.

When I first saw my wound I almost passed out. For the next three or four dressing changes I held a towel over my eyes to stop myself looking at the gaping hole in my stomach.

A dressing system (V.A.C.® Therapy) was used, which seemed to reduce the size of the wound quite rapidly. I was given a portable version of this dressing system (V.A.C. Freedom®), which allowed me to go home just six weeks after the second operation to pick up the pieces of my life and my business. This was very important to me as I am self-employed, although I did have to persuade my GP to fund my treatment at home.

I see training in the use of advanced dressing technology as essential. Fortunately, on one occasion at 5am in accident and emergency, when the nursing staff lacked the necessary experience with this new technology, my partner was able to do a very good job of cleaning the wound out, cutting a new sponge and reapplying the dressing.

Commander N Westwood

Note: This case demonstrates the impact of living with a complex wound. The early introduction of an effective advanced therapy aided recovery and allowed the patient to return home and continue working while the wound healed. It is important to recognise the need for additional training and education when new technologies are introduced.

finding while conducting a trial of platelet-derived growth factor in diabetic foot ulcers³⁰. Studies with skin substitutes have also demonstrated the importance of effective debridement and offloading in the management of diabetic foot wounds^{31,32}. Other factors relating to the wound bed condition and surrounding tissues can also affect outcome; for example, the presence of dystrophic calcification (calcinosis) can result in the failure of a leg ulcer to heal³³.

Ischaemia

According to Mogford and Mustoe³⁴, wound ischaemia is, arguably, the most common cause of a wound failing to heal. Poor perfusion deprives tissue of effective gas and metabolic exchange and leads to increased vascular permeability, leukocyte trapping and the production and release of free oxygen radicals and proteolytic enzymes. Wound healing in the foot has been directly related to both tissue oxygen (TcPO₂) levels³⁵ and perfusion pressures (absolute ankle and toe systolic pressures and brachial pressure ratios)³⁶.

It has been demonstrated that wound healing following surgery is compromised by poor patient hydration and reduced body temperature, resulting in reduced tissue perfusion and poor oxygenation³⁷. In addition to the pro-inflammatory effect of poor tissue perfusion, hypoxia affects cellular function in the key cell types involved in wound healing^{38,39}.

Inflammation

In chronic wounds, there is a tendency for the inflammatory response (an important element in the initial wounding response) to become exaggerated. This results in increased production of pro-inflammatory cytokines, reactive oxygen species and proteolytic enzymes (such as certain MMPs, elastase and plasmin). This activity is combined with reduced inhibitor release of, for example, TIMPs^{40,41} and is enhanced by alterations in wound bed pH⁴². Excessive activity of these enzymes causes not only deleterious extracellular matrix destruction, but also growth factor inactivation^{40,43-45}. The chronic wound environment therefore shows sustained inflammation with matrix degradation, reduced growth factor bioavailability and increased fibroblast senescence, all of which combine to reduce tissue repair, cellular proliferation and angiogenesis.

Infection

There is a close relationship between infection, ischaemia and inflammation, and all have a detrimental effect on wound healing. Chronic wounds are characterised by a high bacterial content, the presence of more than one bacterial strain, an increased tendency to harbour drug-resistant organisms and the presence of biofilms (highly organised microbial communities living within a protective bacteria-derived extracellular matrix)⁴⁶. The presence of bacteria in the tissue of a chronic wound may act as a major factor in delaying healing by stimulating chronic inflammation⁴⁷. Davies *et al*⁴⁸ found a significant link between wound swab bacterial diversity and density and time to healing.

Biofilms may be more commonly present in wounds than is normally assumed: Ngo *et al* found them in debrided tissue from seven of 12 chronic wounds tested⁴⁹. The potential significance of biofilms has been indicated by an *in vitro* study. This showed that bacteria in a biofilm are protected from the action of silver antimicrobials⁵⁰. This led Bjarnsholt *et al*⁵¹ to suggest that a far higher concentration of silver may be required than is currently provided in antimicrobial dressings if treatment is to be effective.

The presence of specific bacterial species in a wound has also been linked to healing outcomes. For example, the presence of *Pseudomonas aeruginosa* in venous leg ulcers can delay healing⁵². It has also been suggested that anaerobic cocci may have a potential role in delayed wound healing^{53,54}.

Anatomical location

When a wound is situated on a pressure-bearing surface or a mobile area such as around a joint, the dressing material and the method of fixing chosen are critical. These can help to preserve limb function, dressing performance, and avoid secondary pressure-related problems. Safely applying a dressing to a neuropathic foot ulcer can be particularly challenging, as the patient frequently lacks a protective pain response. In addition, offloading is a vital part of the management of both diabetic foot and pressure ulcers, and alternative dressing methods may be required, such as protective bridging techniques for topical negative pressure therapy (V.A.C.[®] Therapy) or a windowed cast for pressure redistribution^{55,56}. The diabetic foot is a particularly difficult location for complex wound management. Blume *et al* have recently demonstrated an advantage for topical negative pressure therapy over other advanced dressing products in this situation⁵⁷.

Although traditional beliefs suggest that diabetic heel ulcers do not heal, both Apelqvist *et al*⁵⁸ and Oyibo *et al*⁵⁹ found that the site of foot ulceration did not influence outcome. Chipchase *et al* did find, however, that while the overall healing rates of foot ulcers were similar, heel ulcers tended to heal more slowly⁶⁰. The authors concluded that the outcome was generally favourable, with 65.6% of heel ulcers healed in a median of 200 days⁶⁰.

Response to treatment

It is well documented that the initial response to treatment can be a reliable predictor of subsequent healing time^{1,2,61,62}. Response to treatment can also be an indicator of tissue viability and healing potential. It has been suggested, for example, that a reduction in wound area of around 15% within one to two weeks of topical negative pressure therapy use is an indication that the wound is likely to continue to make good progress, and that this observation can be used as a justification to continue treatment^{63,64}. Using these parameters it is possible to identify non-responsive wounds with an accuracy of 75%; such outcomes are, however, dependent upon the accuracy and consistency of wound measurement. When a patient's wound does not heal in an expected timeframe with 'standard therapy', it is essential to reassess the patient and alter the treatment regimen accordingly^{65,66}.

SKILL AND KNOWLEDGE OF THE HEALTHCARE PROFESSIONAL

The skills, knowledge and attitudes of healthcare professionals can have a major impact on their ability to assess the complexity of a wound, control a patient's symptoms and manage associated problems. However, the issues surrounding non-healing have generally been studied from a patient perspective, with little attention placed on the impact of a non-healing wound on healthcare professionals. Over the past decade, improvements in assessment and treatment have led to heightened expectations of healing: healing rates are considered to be the most important endpoint of wound management¹. As a result, healthcare professionals who are unable to secure the healing of a patient's wound frequently feel impotent, and may become anxious when confronted with the increasing expectations of patients, their families and the healthcare system.

Perceived professional failure, such as that manifested by a non-healing wound, may lead to defensive behaviour in staff. Recent research⁶⁷ has explored patient and professional reactions to wounds that fail to heal. This revealed that professionals were often emotionally overwhelmed by the reality of not being able to heal a wound – a feeling that was compounded if patients' suffering was not controlled or if they were considered difficult to manage. There is evidence to suggest that this feeling of helplessness on the part of healthcare staff can lead to their resorting to social defences such as withdrawing visits, avoiding providing continuity of care, labelling, blaming, and blunting of emotional responses to patient suffering. Although these defensive strategies may help to protect the professional, they can have an extremely negative effect on the patient. Box 2 provides strategies that may help the clinician to focus on the patient's needs.

BOX 2. Patient-centered strategies

- Identify patient's needs and concerns
- Identify and discuss potential barriers to healing
- Provide support, calling on other healthcare professionals or agencies when necessary
- Manage the whole patient (and the patient's care environment)

**RESOURCE/
TREATMENT-RELATED
FACTORS**

An expanding range of physical and biochemical characteristics within and around areas of ulceration have been, and continue to be, defined^{68,69}. These characteristics – such as protease activity, oxidative stress and bioburden – are increasingly being linked to outcome and are being used to target treatments and develop new therapeutic strategies. In the future, access to data on these characteristics (see Future markers below) will play a major role in the clinician’s ability to recognise and treat complex wounds earlier and more effectively.

The patient’s experience described in Box 1 on page 5 illustrates how the early use of an appropriate advanced intervention reduced the complexity of a patient’s wound. This allowed healing progression at a rate that enabled the patient to return quickly to a normal lifestyle and employment. Gaining access to this technology, however, raised issues regarding resources and education.

Several authors^{70,71} have emphasised the importance of educating staff so that they have the knowledge and skills to initiate appropriate therapy and to develop wound care protocols and formularies. Too often, however, therapy is based on tradition and habit, and decisions are made on subjective information, which is neither standardised nor appropriate⁷².

Future markers

Many biochemical characteristics are being investigated as indicators of healing status. Protease levels for example may be potential markers for healing⁶⁸. It is most likely that data on combinations of markers, rather than a single marker, will be required to predict outcome in individual patients⁶⁸. In addition, gene expression profiling is likely to have a role. Chronic ulcers contain distinct sub-populations of cells that have different capacities to heal and gene expression profiling can be used to identify them⁶⁹. Such techniques may, in the future, allow detailed assessment of healing potential and treatment targeting.

CONCLUSION

Wound healing normally occurs in a predictable sequence, but for some wounds healing is prolonged or never achieved. The healing process is the result of a complex interaction between patient- and wound-related factors, the treatment used, and the skills and knowledge of healthcare professionals. Only with careful initial assessment and repeated evaluation of therapy can the factors contributing to wound complexity be recognised and the potential status of wounds assessed. The challenge for healthcare professionals is to initiate effective therapeutic strategies in a timely and cost-effective way so as to reduce wound complexity, manage the patient’s symptoms and expectations, and, where possible, achieve healing.

References

1. Troxler M, Vowden K, Vowden P. Integrating adjunctive therapy into practice: the importance of recognising 'hard-to-heal' wounds. *World Wide Wounds* 2006. Available at: <http://www.worldwidewounds.com/2006/december/Troxler/Integrating-Adjunctive-Therapy-Into-Practice.html> (accessed February 2008).
2. Phillips TJ, Machado F, Trout R, et al. Prognostic indicators in venous ulcers. *J Am Acad Dermatol* 2000; 43(4): 627-30.
3. Zimny S, Pfohl M. Healing times and prediction of wound healing in neuropathic diabetic foot ulcers: a prospective study. *Exp Clin Endocrinol Diabetes* 2005; 113(2): 90-93.
4. Margolis DJ, Allen-Taylor L, Hoffstad O, Berlin JA. The accuracy of venous leg ulcer prognostic models in a wound care system. *Wound Repair Regen* 2004; 12(2): 163-68.
5. Falanga V, Saap LJ, Ozonoff A. Wound bed score and its correlation with healing of chronic wounds. *Dermatol Ther* 2006; 19(6): 383-90.
6. Hill DP, Poore S, Wilson J, et al. Initial healing rates of venous ulcers: are they useful as predictors of healing? *Am J Surg* 2004; 188(1A Suppl): 22-25.
7. Marston WA; Dermagraft Diabetic Foot Ulcer Study Group. Risk factors associated with healing chronic diabetic foot ulcers: the importance of hyperglycemia. *Ostomy Wound Manage* 2006; 52(3): 26-32.
8. Gohel MS, Barwell JR, Taylor M, et al. Long term results of compression therapy alone versus compression plus surgery in chronic venous ulceration (ESCHAR): randomised controlled trial. *BMJ* 2007; 335(7610): 83.
9. Troppmann C, Pierce JL, Gandhi MM, et al. Higher surgical wound complication rates with sirolimus immunosuppression after kidney transplantation: a matched-pair pilot study. *Transplantation* 2003; 76(2): 426-29.
10. Burns J, Pieper B. HIV/AIDS: impact on healing. *Ostomy Wound Manage* 2000; 46(3): 30-44.
11. Franks PJ, Bosanquet N, Connolly M, et al. Venous ulcer healing: effect of socioeconomic factors in London. *J Epidemiol Community Health* 1995; 49(4): 385-88.
12. Detillion CE, Craft TK, Gasper ER, et al. Social facilitation of wound healing. *Psychoneuroendocrinology* 2004; 29(8): 1004-11.
13. Meaurio S, Couilliet D, Vin F. Prognostic factors for venous ulcer healing in a non-selected population of ambulatory patients. *J Wound Care* 2005; 14(1): 31-34.

14. Snyder RJ. Venous leg ulcers in the elderly patient: associated stress, social support, and coping. *Ostomy Wound Manage* 2006; 52(9): 58-68.
15. Yang EV, Bane CM, MacCallum RC, et al. Stress-related modulation of matrix metalloproteinase expression. *J Neuroimmunol* 2002; 133(1-2):144-50.
16. Kiecolt-Glaser JK, Loving TJ, Stowell JR, et al. Hostile marital interactions, proinflammatory cytokine production, and wound healing. *Arch Gen Psychiatry* 2005; 62(12): 1377-84.
17. Hopkins A. Disrupted lives: investigating coping strategies for non-healing leg ulcers. *Br J Nurs* 2004; 13(9): 556-63.
18. Salaman RA, Harding KG. The aetiology and healing rates of chronic leg ulcers. *J Wound Care* 1995; 4(7): 320-23.
19. Vowden K, Vowden P. Bridging the gap: The impact of patient choice on wound care. *J Wound Care* 2006; 15(4): 143-45.
20. Case DO, Andrews JE, Johnson JD, Allard SL. Avoiding versus seeking: the relationship of information seeking to avoidance, blunting, coping, dissonance, and related concepts. *J Med Libr Assoc* 2005; 93(3): 353-62.
21. Soloff PH. Effects of denial on mood, compliance, and quality of functioning after cardiovascular rehabilitation. *Gen Hosp Psychiatry* 1980; 2(2): 134-40.
22. Margolis DJ, Berlin JA, Strom BL. Risk factors associated with the failure of a venous leg ulcer to heal. *Arch Dermatol* 1999; 135(8): 920-26.
23. Henderson EA. The potential effect of fibroblast senescence on wound healing and the chronic wound environment. *J Wound Care* 2006; 15(7): 315-8.
24. Harding KG, Moore K, Phillips TJ. Wound chronicity and fibroblast senescence – implications for treatment. *Int Wound J* 2005; 2(4): 364-68.
25. Margolis DJ, Allen-Taylor L, Hoffstad O, Berlin JA. Healing diabetic neuropathic foot ulcers: are we getting better? *Diabet Med* 2005; 22(2): 172-76.
26. Margolis DJ, Allen-Taylor L, Hoffstad O, Berlin JA. Diabetic neuropathic foot ulcers: predicting which ones will not heal. *Am J Med* 2003; 115(8): 627-31.
27. Margolis DJ, Allen-Taylor L, Hoffstad O, Berlin JA. Diabetic neuropathic foot ulcers: the association of wound size, wound duration, and wound grade on healing. *Diabetes Care* 2002; 25(10): 1835-39.
28. Treece KA, Macfarlane RM, Pound N, et al. Validation of a system of foot ulcer classification in diabetes mellitus. *Diabet Med* 2004; 21(9): 987-91.
29. Kramer JD, Kearney M. Patient, wound, and treatment characteristics associated with healing in pressure ulcers. *Adv Skin Wound Care* 2000; 13(1): 17-24.
30. Steed DL. Clinical evaluation of recombinant human platelet-derived growth factor for the treatment of lower extremity diabetic ulcers. Diabetic Ulcer Study Group. *J Vasc Surg* 2005; 21(1): 71-78.
31. Brem H, Balledux J, Bloom T, et al. Healing of diabetic foot ulcers and pressure ulcers with human skin equivalent: a new paradigm in wound healing. *Arch Surg* 2000; 135(6): 627-34.
32. Veves A, Falanga V, Armstrong DG, et al. Graftskin, a human skin equivalent, is effective in the management of non-infected neuropathic diabetic foot ulcers: a prospective randomized multicenter clinical trial. *Diabetes Care* 2001; 24(2): 290-95.
33. Enoch S, Kupitz S, Miller DR, Harding KG. Dystrophic calcification as a cause for non-healing leg ulcers. *Int Wound J* 2005; 2(2): 142-47.
34. Mogford JE, Mustoe TA. Experimental models of wound healing. In: Falanga V, (ed). *Cutaneous Wound Healing*. London: Martin Dunitz Ltd, 2001.
35. Kalani M, Brismar K, Fagrell B, et al. Transcutaneous oxygen tension and toe blood pressure as predictors for outcome of diabetic foot ulcers. *Diabetes Care* 1999; 22(1): 147-51.
36. Apelqvist J, Castenfors J, Larsson J, et al. Prognostic value of systolic ankle and toe blood pressure levels in outcome of diabetic foot ulcer. *Diabetes Care* 1989; 12(6): 373-78.
37. Gottrup F. Oxygen, wound healing and the development of infection. Present status. *Eur J Surg* 2002; 168: 260-63.
38. Falanga V, Martin TA, Takagi H, et al. Low oxygen tension increases mRNA levels of alpha 1 (I) procollagen in human dermal fibroblasts. *J Cell Physiol* 1993; 157(2): 408-12.
39. Falanga V, Zhou L, Yufit T. Low oxygen tension stimulates collagen synthesis and COL1A1 transcription through the action of TGF- β 1. *J Cell Physiol* 2002; 191(1): 42-50.
40. Medina A, Scott PG, Ghahary A, Tredget EE. Pathophysiology of chronic nonhealing wounds. *J Burn Care Rehabil* 2005; 26(4): 306-19.
41. Trengove NJ, Stacey MC, MacAuley S, et al. Analysis of the acute and chronic wound environments: the role of proteases and their inhibitors. *Wound Repair Regen* 1999; 7(6): 442-52.
42. Shukla VK, Shukla D, Tiwary SK, et al. Evaluation of pH measurement as a method of wound assessment. *J Wound Care* 2007; 16(7): 291-94.
43. Harding KG, Morris HL, Patel GK. Science, medicine and the future: healing chronic wounds. *BMJ* 2002; 324(7330): 160-63.
44. Lauer G, Sollberg S, Cole M, et al. Expression and proteolysis of vascular endothelial growth factor is increased in chronic wounds. *J Invest Dermatol* 2000; 115(1): 12-18.
45. Chen SM, Ward SI, Olutoye OO, et al. Ability of chronic wound fluids to degrade peptide growth factors is associated with increased levels of elastase activity and diminished levels of proteinase inhibitors. *Wound Repair Regen* 1997; 5(1): 23-32.
46. Enoch S, Harding K. Wound bed preparation: The science behind the removal of barriers to healing. *Wounds* 2003; 15(7): 213-29.
47. Bowler PG, Duerden BI, Armstrong DG. Wound microbiology and associated approaches to wound management. *Clin Microbiol Rev* 2001; 14(2): 244-69.
48. Davies CE, Hill KE, Newcombe RG, et al. A prospective study of the microbiology of chronic venous leg ulcers to reevaluate the clinical predictive value of tissue biopsies and swabs. *Wound Repair Regen* 2007; 15(1): 17-22.
49. Ngo Q, Vickery K, Deva AK. Role of bacterial biofilms in chronic wounds. *ANZ J Surg* 2007; 77(Suppl 1): A66.
50. Percival SL, Bowler PG, Dolman J. Antimicrobial activity of silver-containing dressings on wound microorganisms using an *in vitro* biofilm model. *Int Wound J* 2007; 4(2): 186-91.
51. Bjarnsholt T, Kirketerp-Moller K, Kristiansen S, et al. Silver against *Pseudomonas aeruginosa* biofilms. *APMIS* 2007; 115(8): 921-28.
52. Gjødsbøl K, Christensen JJ, Karlsmark T, et al. Multiple bacterial species reside in chronic wounds: a longitudinal study. *Int Wound J* 2006; 3(3): 225-31.
53. Wall IB, Davies CE, Hill KE, et al. Potential role of anaerobic cocci in impaired human wound healing. *Wound Repair Regen* 2002; 10(6): 346-53.
54. Stephens P, Wall IB, Wilson MJ, et al. Anaerobic cocci populating the deep tissues of chronic wounds impair cellular wound healing responses *in vitro*. *Br J Dermatol* 2003; 148(3): 456-66.
55. Tamir E, Daniels TR, Finestone A. Offloading of hindfoot and midfoot neuropathic ulcers using a fiberglass cast with a metal stirrup. *Foot Ankle Int* 2007; 28(10): 1048-52.
56. Armstrong DG, Lavery A. Decreasing foot pressures while implementing topical negative pressure (vacuum assisted closure) therapy. *Int J Low Extremity Wounds* 2004; 3(1): 12-15.
57. Blume PA, Walters J, Payne W, et al. Comparison of negative pressure wound therapy utilizing vacuum-assisted closure to advanced moist wound therapy in the treatment of diabetic foot ulcers: a multicenter randomized controlled trial. *Diabetes Care* 2007 Dec 27 [Epub ahead of print].
58. Apelqvist J, Castenfors J, Larsson J, et al. Wound classification is more important than site of ulceration in the outcome of diabetic foot ulcers. *Diabet Med* 1989; 6(6): 526-30.
59. Oyibo SO, Jude EB, Tarawneh I, et al. The effects of ulcer size and site, patient's age, sex and type and duration of diabetes on the outcome of diabetic foot ulcers. *Diabet Med* 2001; 18(2): 133-38.
60. Chipchase SY, Treece KA, Pound N, et al. Heel ulcers don't heal in diabetes. Or do they? *Diabet Med* 2005; 22(9): 1258-62.
61. Steed DL, Hill DP, Woodske ME, et al. Wound-healing trajectories as outcome measures of venous stasis ulcer treatment. *Int Wound J* 2006; 3(1): 40-47.
62. van Rijswijk L. Full-thickness leg ulcers: patient demographics and predictors of healing. Multi-Center Leg Ulcer Study Group. *J Fam Pract* 1993; 36(6): 625-32.
63. Armstrong DG, Lavery LA. Negative pressure wound therapy after partial diabetic foot amputation: a multicentre, randomised controlled trial. *Lancet* 2005; 366: 1704-10.
64. Attinger CE, Janis JE, Steinberg J, et al. Clinical approach to wounds: debridement and wound bed preparation including the use of dressings and wound-healing adjuvants. *Plast Reconstr Surg* 2006; 117(7 Suppl): 72S-109S.
65. Vowden K, Teot L, Vowden P. Selecting topical negative pressure therapy in practice. In: European Wound Management Association. Position Document: *Topical negative pressure in wound management*. London: MEP Ltd, 2007.
66. Baharestani M, de Leon J (eds). Consensus statement: a practical guide for managing pressure ulcers with negative pressure wound therapy utilizing vacuum-assisted closure – understanding the treatment algorithm. *Adv Skin Wound Care* 2008; 21 (Suppl 1): 1S-20S.
67. Morgan PA, Moffatt CJ. Non-healing leg ulcers and the nurse patient relationship: the nurse's perspective. *Int Wound J*. Accepted for publication January 2008.
68. Moore K, Huddleston E, Stacey MC, Harding KG. Venous leg ulcers – the search for a prognostic indicator. *Int Wound J* 2007; 4(2): 163-72.
69. Brem H, Stojadinovic O, Diegelmann RF, et al. Molecular markers in patients with chronic wounds to guide surgical debridement. *Mol Med* 2007; 13(1-2): 30-39.
70. Bux M, Malhi JS. Assessing the use of dressings in practice. *J Wound Care* 1996; 5(7): 305-8.
71. Preece J. Development of a wound-management formulary for use in clinical practice. *Prof Nurse* 2004; 20(3): 27-29.
72. Barlow J. Prescribing for leg ulcers in general practice, part 1. *J Wound Care* 1999; 8(7): 369-71.

Psychosocial factors and delayed healing

C Moffatt¹, K Vowden², P Price³, P Vowden⁴

INTRODUCTION

It is now recognised that psychosocial factors – anxiety and depression, social isolation, low economic status and pain, for example – are associated with delayed healing of wounds. However, little research has been undertaken to examine how these factors may not only be a consequence of delayed healing, but may also play an important role in delaying healing. It is suggested that an evaluation of a patient's psychosocial status should therefore be included as part of a general wound assessment.

DELAYED HEALING AND QUALITY OF LIFE

Patients who have a chronic, non-healing wound are affected by a complex interaction of factors that influence their psychological response and ability to cope with the situation. These include the patients' previous experiences, together with their individual circumstances, preferences and values. The impact on quality of life of these factors is far-reaching and often extends beyond the local management of an open wound.

In 1997, Chase *et al* introduced the concept of 'forever healing'¹. It is not unusual for patients with chronic, recurring wounds who experience long episodes of slow or delayed healing, with unremitting symptoms such as pain, to believe that they are in a permanent state of 'wounding'. Briggs and Flemming continued this theme when they emphasised that chronic wounds should receive the same focus of care as other chronic conditions such as diabetes and arthritis, and that there should be an emphasis on learning to live with and to manage the condition². There is much literature from the field of oncology to suggest that patients 're-calibrate' their views on quality of life in accordance with their shifting priorities as they progress along their illness and treatment journey³.

HEALTH-RELATED QUALITY OF LIFE

In 2003, van Korlaar *et al* defined health-related quality of life (HRQoL) as 'the functional effect of an illness and its consequent therapy upon a patient, as perceived by the patient'⁴. Clinicians often use HRQoL to measure the effect chronic illness has on a patient to understand better how it interferes with that person's day-to-day life. HRQoL is a measure distinct from overall quality of life, which takes into account many different factors that are not necessarily related to an individual's health – economic status, for instance. It can be measured using physical, social and psychological factors, among others. Research has shown that chronic wounds are associated with a severe deficit in HRQoL⁵.

QUALITY OF LIFE AND DELAYED HEALING

Hopkins carried out an in-depth assessment of patients with leg ulcers, based on semi-structured interviews⁶. The study examined the impact of leg ulcers on daily living and provided valuable qualitative data. It was found that while patients accepted leg ulcers as 'part and parcel' of their lives, they struggled with the social exclusion that ulcers brought. Using a generic assessment tool (Nottingham Health Profile – available from www.cebp.nl/media/m83.pdf [accessed March 2008]), Franks and Moffatt⁷ demonstrated that large leg ulcers were associated with pain, emotional problems and social isolation, and pain and isolation were significantly associated with long ulcer duration.

When examining current life situation and function in elderly people with and without leg ulceration, Wissing *et al* concluded that people with leg ulceration are more vulnerable and have a poorer quality of life⁸. Persoon *et al* also reviewed the overall effect of leg

1. Professor and Co-director, CRICP, Faculty of Health and Social Sciences, Thames Valley University, London, UK.

2. Nurse Consultant, University of Bradford, and Bradford Teaching Hospitals NHS Foundation Trust, Bradford, UK. 3. Director, Wound Healing Research Unit, School of Medicine, Cardiff University, UK.

4. Visiting Professor of Wound Healing, University of Bradford, and Consultant Vascular Surgeon, Bradford Teaching Hospitals NHS Foundation Trust, Bradford, UK.

KEY POINTS

1. Anxiety, depression, social isolation, economic hardship and pain are key psychosocial factors associated with delayed healing.
2. It is important to recognise that psychosocial factors may not only be a consequence of delayed healing, but may also play an important role in delaying healing.
3. The future needs to focus on raising awareness of the significance of these factors and developing effective strategies to manage them.

ulceration on daily living and indicated that issues such as pain, reduced mobility, odour and poor social interaction had a negative impact on patients' lives⁹. A similar association has been made in patients with diabetic foot ulceration¹⁰⁻¹⁴ and in pressure ulcer populations¹⁵. Interestingly there is relatively little research focusing on the impact of pressure ulcers on a patient's quality of life¹⁶.

SOCIOECONOMIC STATUS

Socioeconomic status is recognised as a powerful predictor of health outcome in the general population, with lower occupational status being associated with poorer healing¹⁷. This is supported by the work of Franks *et al*, who also found that low social class, lack of central heating and being single were significantly associated with delayed healing¹⁸. It has been shown that venous ulcers occur mainly in low income populations and that these ulcers are present for long periods and are recurrent. This can have a significant impact on patients' ability to work, with the potential to reduce further their economic status^{19,20}.

SOCIAL ISOLATION

Social isolation has been defined as a lack of or low level of social contact and/or communication with family, friends, neighbours, community and social sources²¹. It can be a consequence of geographic, physical, economic, personal and social barriers, and appears to affect many patients living with a chronic wound²¹. Moffatt *et al* showed that patients often have very low levels of perceived social support and small social networks²². This may result from a number of issues: lack of mobility, curtailment of social activities and embarrassment, for example. Odour is recognised as a particularly distressing symptom of chronic wounds and can cause embarrassment and social withdrawal^{23,24}. Problems of social isolation and restriction were also apparent in an analysis of venous ulceration in intravenous drug users²⁵.

The perceived level of social support in patients with leg ulceration has been shown to be significantly lower than in age/gender matched controls, while patients with larger social networks have an increased likelihood of wound healing²². It must be noted that confounding was not analysed in this study. Patients who are socially isolated and who lack friends or family support, may be at increased risk of psychological problems such as depression and anxiety^{5,26}.

PSYCHOSOCIAL IMPACT OF WOUND-RELATED SYMPTOMS

Sleep deprivation, anxiety and depression, pain and the perception of pain, are all intimately linked and share a common pathway, probably through a neuroendocrine response that influences inflammatory responses, host resistance and vasoreactivity (see Vowden *et al*, pages 2–9). Inadequate management of these factors may lead to an adverse wound response and delayed healing.

The chronic illness literature shows that the intrusion of wound-related problems such as pain, exudate and odour may cause patients to make lifestyle changes²⁶. Patients' beliefs and attitudes about their condition, coupled with uncontrolled symptoms, are perhaps among the most important factors to influence their ability to adhere to treatment, and may increase the risk of delayed healing and development of psychological problems such as depression and anxiety²⁷.

Sleep deprivation/disturbance

Interference with sleep is a common problem in patients with chronic wounds and is often associated with uncontrolled pain²⁸. It is likely that loss of sleep is one of the most important factors to interfere with a patient's sense of wellbeing²⁷. Despite this, it has been given very little attention by health professionals.

Research from the chronic illness literature has shown the profound effect sleep disturbance has on daily living²⁸. Exhaustion may prevent patients from being able to socialise and, as sleep schedules become more irregular, patients are often forced to sleep during the day²⁷.

BOX 1. Condition-specific tools for measuring HRQoL

- Chronic Lower Limb Venous Insufficiency Questionnaire⁴⁷
- Cardiff Wound Impact Schedule⁴⁸ (available in other languages)
- Freiburg Life Quality Assessment (Freiburger Lebensqualität – FLQA)⁴⁹
- Charing Cross Questionnaire⁵⁰
- Venous Insufficiency Epidemiological and Economic Study (VEINES)⁵¹

Anxiety and depression

Interference with sleep may also affect personal relationships. For example, patients who suffer from disturbed sleep may have to sleep in a separate room to avoid disturbing a partner. This may further exacerbate their feelings of isolation and affect family relationships within the home. Partners may also be anxious about sharing a bed with and/or having a sexual relationship with a person with a chronic wound, fearing they will inadvertently cause pain or trauma²⁷. Furthermore, uncontrolled odour from the wound may lead to repulsion by loved ones, who may choose to sleep separately.

Sleep deprivation may interfere with normal immune responses, which, in turn, may affect healing and host defences²⁹. However, this suggestion remains controversial. Mostaghimi *et al* found that sleep deprivation did not appear to have a significant impact on wound healing in a rat model³⁰, while Gumustekin *et al* found that sleep deprivation in combination with nicotine administration adversely affected healing in a similar rat model³¹. These changes may be linked to cortisol levels, with elevated morning cortisol levels being found to be associated with delayed healing in a human volunteer model³². In addition, Wright *et al* demonstrated a blunting of the cortisol secretion response following sleep deprivation³³. This work needs repeating in a chronic wound population before we can truly ascertain its relevance.

Pain is the most significant predictor of depression in leg ulceration and interferes with individuals' ability to cope with their situation²⁶. Research has shown that anxiety and depression may be associated with delayed healing in leg ulceration³⁴. This study found that 15 out of 16 patients diagnosed with anxiety (using an anxiety and depression scale) experienced delayed wound healing, while wounds were slow to heal in all 13 patients who had depression³⁴. Kiecolt-Glaser *et al* demonstrated that delayed healing of acute wounds occurred in patients experiencing high levels of anxiety when compared to normal controls³⁵. However, further research is needed to clarify the relationship between healing and clinically significant anxiety and depression.

It is unclear whether depression is a consequence of non-healing or whether it is caused by other interrelated factors such as sleep deprivation, low economic status and social isolation. In addition, the question about whether psychological distress may affect healing by influencing the endocrine and neuro-endocrine systems must be further addressed.

Psychoneuro-immunology

Broadbent *et al* concluded that psychological stress can lead to an impaired inflammatory response and matrix degradation after surgery and that it may result in delayed healing³⁶. Similarly, Marucha *et al* found more rapid healing of mucosal wounds in non-anxious subjects³⁷. Anxiety has also been associated with delayed skin barrier function recovery³⁸, and symptoms of depression have been linked to delayed mucosal wound healing³⁹. Furthermore, pain has been shown to play an important role in post-surgery wound healing⁴⁰. Because of the potential for pain to impact on healing, the literature now demands that clinicians recognise that persistent pain can dominate patients' lives and that, as such, it requires effective management⁴¹.

Wound healing is associated with a reduction in pain intensity. Although the mechanisms for this remain poorly understood, it is thought to be due to reduction in the levels of inflammatory cytokines as healing progresses⁴². Improvement in pain can also occur in those who fail to heal, although often to a lesser degree. The improvement may be due to effective management of other factors, such as oedema, and reduction in bacterial burden and exudate⁴³.

Exudate and odour

Many chronic, non-healing wounds produce copious amounts of exudate, which can cause considerable patient distress. However, Jones *et al* found that pain and odour, rather than exudate, were associated with anxiety and depression²⁶. Patients fear that people may notice or comment on the odour, and this may cause them to become socially isolated from family and

friends. Such fears may have a profound effect on the development of personal relationships. Control of exudate levels can contribute to a reduction in odour⁴⁴. This may involve assessing the wound, reducing the bacterial burden, choosing wound management products that are designed to manage exudate, and correcting the underlying problem⁴⁴.

Infection

Clinical experience shows that recurrent wound infections may cause severe patient anxiety and depression. During episodes of infection, patients may experience unpleasant systemic symptoms and also notice a deterioration in their wounds – a visible reminder of their illness and of their vulnerability.

Media attention on problems such as hospital hygiene and MRSA (methicillin-resistant *Staphylococcus aureus*) has highlighted issues surrounding infection risk. Although little attempt has been made to understand how this publicity might affect patients psychologically, anecdotal reports suggest that they are often extremely anxious about developing resistant or hospital-acquired infections. As a consequence, some patients may not wish to be referred to a hospital for specialist advice because they fear that infection may cause further problems, including possible death.

Lifestyle issues

Many patients with chronic, non-healing wounds are forced to make considerable changes to their lifestyle⁴⁵. In a phenomenological study involving 14 patients with painful venous leg ulcers, it was found that a number of them felt frustrated with many aspects of their lives⁴⁵. Some had to make major life changes, such as retirement, because they realised that their ulcer was not healing as a consequence of their current lifestyle. Patients experienced considerable guilt when they were faced with making a choice between following their healthcare providers' advice and continuing with an activity such as work, which they felt was of greater importance. In such situations, the professionals frequently used blaming behaviour, which increased the emotional distress felt by patients, particularly if their wounds were not healing⁴⁵. There is evidence, however, that many patients do adjust to their condition and in many cases this will be facilitated by access to appropriate treatment strategies that help patients to return to a normal lifestyle (see Box 1, page 5).

MEASURING PSYCHOSOCIAL IMPACT

There are a number of different ways of assessing HRQoL, each with advantages and disadvantages. Generic measures of HRQoL have been designed to look at the impact of a given disorder on everyday living and compare any given group of patients with age and sex-matched norms established for the healthy population. These tools allow for comparisons to be made across a variety of conditions or diseases, such that the impact of a chronic, non-healing wound could be compared with the impact of HRQoL on having a hip replaced. However, the questions used in these tools may not focus adequately on the specific issues related to living with chronic wounds. Condition-specific tools are more responsive to items of particular interest to patients, as the questions relate directly to the condition being investigated. Experts recommend using both a generic and a condition-specific tool when using HRQoL as an outcome in clinical trials⁴⁶. Some examples of condition-specific tools used in wound care are shown in Box 1 (see page 12). The ideal HRQoL questionnaire is user-friendly and easy for the clinician to integrate into everyday practice. It will have sufficient discrimination and sensitivity to detect change in HRQoL over time and to take into account cross-cultural issues⁵².

CONCLUSION

The key to managing quality-of-life issues in the small but important group of patients with chronic wounds that do not heal as expected lies in identifying problems early. Professionals must give priority to helping patients have the very best quality of life despite living with a chronic wound. The emphasis must be on good symptom control, with the elimination of pain a priority for all patients, whatever the underlying condition or prognosis. Goals of treatment should move towards comfort and patient tolerance. This will require a

reappraisal of the treatment plan, with referral to appropriate members of the multidisciplinary team, eg psychologists, pain specialists and social workers. It also requires recognition that patients are partners in their care.

Research has shown that living with a hard-to-heal wound often means being faced with a number of intimately linked psychosocial issues, which, if not adequately addressed and managed, may lead to an adverse response and further healing problems. The future needs to focus on raising the profile of these issues and on developing sensitive, reliable and user-friendly tools that detect and assess their impact on the patient.

References

- Chase SK, Melloni M, Savage A. A forever healing: the lived experience of venous ulcer disease. *J Vasc Nurs* 1997; 15(2): 73-8
- Briggs M, Flemming K. Living with leg ulceration: a synthesis of qualitative research. *J Adv Nurs* 2007; 59(4): 319-28.
- Oort FJ, Visser MR, Sprangers MA. An application of structural equation modeling to detect response shifts and true change in quality of life data from cancer patients undergoing invasive surgery. *Qual Life Res* 2005; 14(3): 599-609.
- van Korlaar I, Vossen C, Rosendaal FR, et al. Quality of life in venous disease. *Thromb Haemost* 2003; 90(1): 27-35.
- Franks PJ, Moffatt CJ. Who suffers most from leg ulceration? *J Wound Care* 1998; 7(8): 383-85.
- Hopkins A. Disrupted lives: investigating coping strategies for non-healing leg ulcers. *Br J Nurs* 2004; 13(9): 556-63.
- Franks PJ, Moffatt CJ. Do clinical and social factors predict quality of life in leg ulceration? *Int J Low Extrem Wounds* 2006; 5(4): 236-43.
- Wissing U, Ek AC, Unosson M. Life situation and function in elderly people with and without leg ulcers. *Scand J Caring Sci* 2002; 16(1): 59-65.
- Persoon A, Heinen MM, van der Vleuten CJM, et al. Leg ulcers: a review of their impact on daily life. *J Clin Nurs* 2004; 13(3): 341-54.
- Leymarie F, Richard JL, Malgrange D. Factors associated with diabetic patients at high risk for foot ulceration. *Diabetes Metab* 2005; 31(6): 603-5.
- Vileikyte L, Leventhal H, Gonzelez JS, et al. Diabetic peripheral neuropathy and depressive symptoms: the association revisited. *Diabetes Care* 2005; 28(10): 2378-83.
- Ribu L, Wahl A. Living with diabetic foot ulcers: a life of fear, restrictions and pain. *Ostomy Wound Manage* 2004; 50: 57-67.
- Brod M. Quality of life issues in patients with diabetes and lower extremity ulcers: patients and care givers. *Qual Life Res* 1998; 7(4): 365-72.
- Price P. The diabetic foot: quality of life. *Clin Infect Dis* 2004; 39(2 Suppl): S129-31.
- Fox C. Living with a pressure ulcer: a descriptive study of patients' experiences. *Br J Community Nurs* 2002; 7(6 Suppl): 10-22.
- Hopkins A, Dealey C, Bale S, et al. Patient stories of living with a pressure ulcer. *J Advanced Nurs* 2006; 56(4): 345-53.
- Callam MJ, Harper DR, Dale JJ, Ruckley CV. Chronic leg ulceration: socio-economic aspects. *Scott Med J* 1988; 33(6): 358-60.
- Franks PJ, Bosanquet N, Connolly M, et al. Venous ulcer healing: effect of socioeconomic factors in London. *J Epidemiol Community Health* 1995; 49(4): 385-88.
- Abbate LP, Lastoria S. Venous ulcer: epidemiology, pathophysiology, diagnosis and treatment. *Int J Dermatol* 2005; 44(6): 449-56.
- Abbate LP, Lastoria S, de Almeida Rollo H, Stolf HO. A sociodemographic, clinical study of patients with venous ulcer. *Int J Dermatol* 2005; 44(12): 989-92.
- Keeling D, Price P, Jones E, Harding KG. Social support for elderly patients with chronic wounds. *J Wound Care* 1997; 6(8): 389-91.
- Moffatt CJ, Franks PJ, Doherty DC, et al. Sociodemographic factors in chronic leg ulceration. *Br J Dermatol* 2006; 155(2): 307-12.
- Douglas V. Living with a chronic leg ulcer: an insight into patients' experiences and feelings. *J Wound Care* 2001; 10(9): 355-60.
- Rich A, McLachlan L. How living with a leg ulcer affects people's daily life: a nurse-led study. *J Wound Care* 2003; 12(2): 51-54.
- Palfreyman SJ, Tod AM, King B, et al. Impact of intravenous drug use on quality of life for patients with venous ulcers. *J Adv Nurs* 2007; 58(5): 458-67.
- Jones J, Barr W, Robinson J, Carlisle C. Depression in patients with chronic venous ulceration. *Br J Nurs* 2006; 15(11): S17-23.
- Moffatt CJ. Perspectives on concordance in leg ulcer management. *J Wound Care* 2004; 13(6): 243-48.
- Dworkin RH, Breitbart WS (eds). *Psychosocial Aspects of Pain. A handbook for health care providers. Progress in Pain Research and Management. Volume 27.* Seattle, WA: IASP Press, 2004.
- Hui L, Hua F, Diandong H, Hong Y. Effects of sleep and sleep deprivation on immunoglobulins and complement in humans. *Brain Behav Immun* 2007; 21(3): 308-10.
- Mostaghimi L, Obermeyer WH, Ballamudi B, et al. Effects of sleep deprivation on wound healing. *J Sleep Res* 2005; 14(3): 213-19.
- Gumustekin K, Seven B, Karabulut N, et al. Effects of sleep deprivation, nicotine, and selenium on wound healing in rats. *Int J Neurosci* 2004; 114(11): 1433-42.
- Ebrecht M, Hextall J, Kirtley LG, et al. Perceived stress and cortisol levels predict speed of wound healing in healthy male adults. *Psychoneuroendocrinology* 2004; 29(6): 798-809.
- Wright CE, Valdimarsdottir HB, Erbligh J, Bovbjerg DH. Poor sleep the night before an experimental stress task is associated with reduced cortisol reactivity in healthy women. *Biol Psychol* 2007; 74(3): 319-27.
- Cole-King A, Harding KG. Psychological factors and delayed healing in chronic wounds. *Psychosom Med* 2001; 63(2): 216-20.
- Kiecolt-Glaser JK, Marucha PT, Malarkey WB, et al. Slowing of wound healing by psychological stress. *Lancet* 1995; 346(8984): 1194-6.
- Broadbent E, Petrie KJ, Alley PG, Booth RJ. Psychological stress impairs early wound repair following surgery. *Psychosom Med* 2003; 65(5): 865-9.
- Marucha PT, Kiecolt-Glaser JK, Favagehi M. Mucosal wound healing is impaired by examination stress. *Psychosom Med* 1998; 60(3): 362-5.
- Robles TF. Stress, social support, and delayed skin barrier recovery. *Psychosom Med* 2007; 69(8): 807-15.
- Bosch JA, Engeland CG, Cacioppo JT, Marucha PT. Depressive symptoms predict mucosal wound healing. *Psychosom Med* 2007; 69(7): 597-605.
- McGuire L, Heffner K, Glasner R, et al. Pain and wound healing in surgical patients. *Ann Behav Med* 2006; 31(2): 165-72.
- Price P, Fogh K, Glynn C, et al. Managing painful chronic wounds: the Wound Pain Management Model. *Int Wound J* 2007; 4 (1 Suppl): 4-15.
- Partsch H. Understanding the pathophysiological effects of compression. In: European Wound Management Association (EWMA). Position document: *Understanding compression therapy*. London: MEP Ltd, 2003.
- European Wound Management Association (EWMA). Position document: *Pain at wound dressing changes*. London: MEP Ltd, 2002.
- World Union of Wound Healing Societies (WUWHS). *Principles of best practice. Wound exudate and the role of dressings. A consensus document*. London: MEP Ltd, 2007.
- Krasner D. Painful venous ulcers: themes and stories about their impact on quality of life. *Ostomy Wound Manage* 1998; 44(9): 38-46.
- Berzon RA. Understanding and using health-related quality of life instruments within clinical research studies. In: Staquet M, Hays RD, Fayers PM (eds). *Quality of Life Assessment in Clinical Trials: Methods and practice*. Oxford: OUP, 1998.
- Launois R, Rebol-Marty J, Henry B. Construction and validation of a quality of life questionnaire in chronic lower limb venous insufficiency (CIVIQ). *Qual Life Res* 1996; 5(6): 539-54.
- Price P, Harding K. Cardiff Wound Impact Schedule: the development of a condition specific questionnaire to assess health-related quality of life in patients with chronic wounds of the lower limb. *Int Wound J* 2004; 1(1): 10-17.
- Augustin M, Dieterle W, Zschocke I, et al. Development and validation of a disease-specific questionnaire on the quality of life of patients with chronic venous insufficiency. *Vasa* 1997; 26(4): 291-301.
- Smith JJ, Guest MG, Greenhalgh RM, Davies AH. Measuring the quality of life in patients with venous ulcers. *J Vasc Surg* 2000; 31(4): 642-49.
- Lamping DL, Schroter S, Kurz X, et al. Evaluation of outcomes in chronic venous disorders of the leg: development of a scientifically rigorous, patient-reported measure of symptom and quality of life. *J Vasc Surg* 2003; 37(2): 410-19.
- Streiner DL, Norman GR. *Health Measurement Scales: A practical guide to their development and use* (2nd edition). Oxford: OUP, 2003.

Economic burden of hard-to-heal wounds

M Romanelli¹, JD Vuerstaek², LC Rogers³, DG Armstrong⁴, JApelqvist⁵

INTRODUCTION

Hard-to-heal wounds are associated with long duration and a high incidence of complications, often resulting in considerable financial burden. To gain an understanding of the cost issues involved in various types of hard-to-heal wounds, this paper draws on the experiences of a number of authors from different countries.

PRESSURE ULCERS

A multiplicity of factors can influence total cost of care for pressure ulcers (Box 1) and reliable data related specifically to the costs of hard-to-heal pressure ulcers is limited. However, a study by Bennett *et al* estimated the cost of healing a grade 4 pressure ulcer to be about ten times that of healing a grade 1 ulcer¹. These authors also estimated that in 2000 the cost of healing a hard-to-heal (eg infected) grade 4 pressure ulcer was £9,670 versus £7,750 for a grade 4 ulcer that healed without complication within the expected timeframe¹.

An Italian perspective

BOX 1. Examples of cost drivers (adapted from^{1,2})

- Nurse time – dressing changes; continence, skin and wound care; risk assessment; additional monitoring
- Increased dependency – extended hospital stays, increased requirement for diagnostic examinations and tests, nutritional support, surgical intervention, pain control, psychosocial support
- Infection – antibiotics, higher dependency nursing, increased medical staff time*
- Litigation costs – Europe continues to have increasing litigation costs and is following the US model²
- Equipment/technology – frequency of dressing changes, costs of products; provision of pressure redistribution surfaces

*The estimated cost of treating an episode of osteomyelitis in a grade 4 pressure ulcer is £24,000¹.

Italy has a largely decentralised public health service (Servizio Sanitario Nazionale) with healthcare spending decisions made mainly at a local or regional level. In 1994, the overall prevalence of pressure ulcers in 2,144 hospital-based patients in Italy was 13.2%³. Patients with pressure ulcers are legally entitled to regular consultations with a nurse specialist and to have access to a series of devices ranging from support surfaces to dressings. However, these are limited to what is available on the regional drug tariff. Currently, there is only one region (Piedmont) where the drug tariff has been updated to include sophisticated new products such as topical negative pressure therapy and a range of special beds.

Hospitals are reimbursed for inpatient care on the basis of length of stay – the faster the patient is discharged, the more money the hospital is paid. As a result, inpatient treatment of patients who require prolonged hospital stays may result in substantial costs to individual hospitals but low reimbursement. This system may lead to the premature discharge of patients or even resistance to hospital admission. In nursing homes, reimbursement is based on a daily rate with additional reimbursement for individual nursing interventions. This may encourage daily dressing changes, which is often contrary to best wound care practice.

Home care (community) treatment providers are paid a fixed fee to provide care to a patient over a period of 60 days without a requirement for daily patient visits. In many cases, this approach is more positive for wound care as dressings are changed at appropriate intervals and not routinely on a daily basis.

Future focus

A key objective for the Italian healthcare system is the early use of suitable interventions to prevent progression of a pressure ulcer to a more severe grade so that more patients can be nursed at lower cost in the community. More effective systems need to be developed that facilitate prevention and early detection of pressure ulcers. These will need to be supported by improved wound care education for all healthcare practitioners.

More detailed epidemiological and quality of life studies along with re-evaluation of wound care reimbursement by the Italian Ministry of Health would also contribute to improved management and outcomes, with access to newer therapies in the home care setting.

VENOUS LEG ULCERS

The prevalence of venous leg ulcers is approximately 1% in the whole population; this increases with age⁴. It is accepted that where appropriate research-based treatment protocols are in place, about 50% of ulcers will heal within four months, 20% do not heal within two years and about 8% do not heal even after five years⁵. In 1991, the national cost of leg ulcer treatment in the USA was estimated to be between US \$775 million and US \$1 billion annually⁶. In the UK, the total cost of treating venous leg ulcers for 2005/6 has been estimated as at least £168–198 million⁷. The factors that correlate positively with increasing cost are duration of active therapy, ulcer size and the presence of at least one comorbidity⁸.

Note on currency:

To prevent inaccuracies, currencies have been retained as in the original source.

Contributors to this paper:

1. Director, Wound Healing Research Unit, University of Pisa, Italy.
2. Dermatologist, DermaClinic, Genk, Belgium.
3. Director, Amputation Prevention Center, Broadlawns Medical Center, Des Moines, Iowa, USA.
4. Professor of Surgery, Scholl College of Podiatric Medicine, Rosalind Franklin University of Medicine and Science, North Chicago, Illinois, USA.
5. Associate Professor for Diabetes and Endocrinology, University Hospital of Malmö, University of Lund, Malmö, Sweden.

DIABETIC FOOT ULCERS

BOX 2. Measures to reduce DFU

- Better organised¹⁶ multidisciplinary foot care
- Extra depth or custom moulded shoes¹⁷
- Home monitoring of foot temperatures¹⁸

NB: If combined or adopted in part, the above measures may prevent 48–73% of DFUs and LEAs, saving the USA healthcare system up to US \$21.8 billion annually¹⁴

CURRENT RESEARCH

Factors influencing cost/resource use

A recent study by Tennvall *et al* confirmed that leg ulcers with an area of 10cm² or more and of longer duration (ie six months or more) are the most expensive to treat⁹. The yearly cost, for example, of treating a venous leg ulcer of <six months' duration in Sweden was estimated as 1,827 euros versus 2,585 euros for an ulcer of >six months' duration⁹.

Product costs are often considered to be synonymous with the cost of care. However, the purchase price of dressings (including compression bandages), rarely forms a significant fraction of the actual cost of care^{8,10}. Dressing costs are often negligible in comparison with other factors such as costs associated with frequency of dressing changes, nursing time, time-to-heal, quality of healing (avoidance of ulcer recurrence), ability to return to paid employment and the cost of the care setting¹⁰. Cost-cutting exercises that focus on the use of less costly dressings might in fact result in higher overall costs if the dressing change frequency is increased (necessitating increased nursing time) and time-to-heal is extended¹¹.

When analysed by care setting, home healthcare accounted for the largest proportion (48%) of the total cost of treating venous leg ulcers in the USA⁸. A study in the UK calculated that the cost per patient could be substantially reduced by treating patients in a leg ulcer clinic rather than in the community⁷. These findings suggest that wider provision of high quality care based in outpatient clinics may help to improve cost efficiency.

Up to 25% of the estimated 20 million people with diabetes in the USA will develop a diabetic foot ulcer (DFU) during their lifetime¹². Roughly 50% of DFUs become infected and about one in five of these patients will undergo a lower extremity amputation (LEA)¹³. The estimated cost of treating a DFU in the USA is up to US \$20,000 and a major limb amputation costs about US \$70,000¹⁴. Recent estimates reveal that DFUs and amputations alone cost the USA healthcare system about US \$30 billion yearly¹⁴ and lower extremity complications account for approximately one-fifth of the total cost of diabetes.

Pecoraro *et al* reported that an identifiable and potentially preventable event is present in over 85% of diabetes-related LEAs and that roughly the same percentage of amputations are preceded by a foot ulcer¹⁵. Simple preventative measures shown to reduce ulceration (and thus amputation) are listed in Box 2.

Although the five-year relative mortality rate is higher after a diabetes-related LEA than for most cancers¹⁹, prevention strategies still receive little attention and government research funding in the USA. Once a foot ulcer has occurred, attention should be directed at healing the wound quickly to avoid infection and possible amputation.

Few studies in wound care provide full cost-effectiveness analysis. Comparisons are further complicated by differences in study design. These include whether the study is prospective or retrospective, patient inclusion criteria, wound type, healthcare setting studied (eg primary or secondary care), treatment practices, period of investigation, reimbursement system and countries included²⁰. Most studies focus on the estimated direct medical costs of treating wounds, but not the indirect costs relating to loss of productivity, individual patient and family costs, and loss of quality of life. Therefore cost estimates are often falsely low²⁰⁻²².

Using the model of hard-to-heal DFUs, the most significant factors related to high cost have been identified as number of surgical procedures, inpatient hospital stay and time to healing²³.

The cost of a minor LEA (ie foot level) in Sweden has been estimated as SEK 258,320. For major lower extremity amputation (ie above ankle) the figure is SEK 390,150, of which 77% of the cost occurred after surgery²⁴. Amputation was regarded as costly as a result of its consequences, such as the need for additional nursing and institutional care. This is why cost analysis studies should follow up patients until a specific endpoint (eg complete healing or completion of successful rehabilitation). Although many of the new technologies and dressings used to treat hard-to-heal wounds are more expensive than the compared

KEY POINTS

1. Hard-to-heal wounds often result in a considerable financial burden.
2. Newer, more expensive technologies may be more cost-effective if they result in faster healing.
3. Variations in the cost criteria used for studies makes comparing cost analysis data across different countries and healthcare settings difficult.
4. There needs to be a focus on standardising cost criteria in order to identify the most economically effective ways to treat hard-to-heal wounds.

treatment, their use may be more cost-effective if they result in more effective or faster healing^{20,21,25,26}. Therefore, when assessing use of resources, it is important not to focus on unit costs such as dressings or procedures, but to adopt a broader view of total resource use. It is crucial to be aware that a specific treatment could be more cost-effective in one group of patients or for one type of wound than in others, or in one setting or country than another.

In a study comparing resource use associated with diabetic foot infection in three European countries, substantial differences were identified in the rate and duration of inpatient stay, and in the use of antibiotics and vascular surgery²⁷. The authors conclude that these differences could largely be explained by variations in access to inpatient and outpatient facilities, selection bias of patients, patients' characteristics, reimbursement and healthcare systems. The same observations could be made from the recently presented Eurodiale study²⁸.

In a comparison of diabetes-related foot lesions in patients in the Netherlands and California, the duration of hospital stay was substantially longer in the Netherlands, whereas the incidence of lower extremity major amputation was higher in the USA²⁸. This has an important implication in the drive to cut costs by early discharge. These variations might be explained by differences in access to healthcare, financing and reimbursement systems²⁹. It is unfortunate that reimbursement systems in some countries appear to favour amputation because of shorter hospital stays and reduced length of time to healing.

CONCLUSION

A major problem with analyses of cost of disease states is the wide variation in cost criteria used. Difficulties in comparing cost analyses are compounded by variations in care protocols and the economic status of different countries, eg variations in rates of pay to healthcare staff. Significant efforts will be required to standardise criteria for cost analyses that can be used to further identify the most economically effective ways to treat hard-to-heal wounds and to aid useful comparisons between different care protocols and healthcare systems.

References

1. Bennett G, Dealey C, Posnett J. The cost of pressure ulcers in the UK. *Age and Ageing* 2004; 33: 230-35.
2. Romanelli M (ed). *Science and Practice of Pressure Ulcer Management*. London: Springer-Verlag, 2006.
3. AISLeC. *Profilassi delle lesioni da decubito e cambio posturale: ricerca multicentrica*. AISLeC 1995.
4. Margolis DJ, Kantor J. Epidemiology. In: Morison MJ, Moffatt CJ, Franks PJ (eds). *Leg Ulcers: A problem learning approach*. London: Mosby Elsevier 2007; 65-73.
5. Nicolaides AN. Investigation of chronic venous insufficiency: a consensus statement. *Circulation* 2000;102(20): E126-63.
6. Phillips TJ, Dover JS. Leg ulcers. *J Am Acad Dermatol* 1991; 25: 965-87.
7. Posnett J, Franks PJ. The costs of skin breakdown and ulceration in the UK. In: Pownall M (ed). *Skin Breakdown – the silent epidemic*. Hull: The Smith and Nephew Foundation, 2007.
8. Olin JW, Beusterien KM, Childs MB, et al. Medical costs of treating venous stasis ulcers: evidence from a retrospective cohort study. *Vasc Med* 1999; 4(1): 1-7.
9. Tennvall GR, Hjelmgren J. Annual costs of treatment for venous leg ulcers in Sweden and the United Kingdom. *Wound Rep Reg* 2005; 13: 13-18.
10. Kerstein M, Gemmen E, van Rijswijk L, et al. Cost and cost effectiveness of venous and pressure ulcer protocols of care. *Dis Manage Health Outcomes* 2001; 9(11): 651-63.
11. Vuerstaek JDD, Vainas T, Wuite J, et al. State-of-the-art treatment of chronic leg ulcers: a randomized controlled trial comparing vacuum-assisted closure (V.A.C.) with modern wound dressings. *J Vasc Surg* 2006; 44(5):1029-37.
12. Centers for Disease Control and Prevention. *National Diabetes Fact Sheet: General information and national estimates on diabetes in the United States, 2005*. Atlanta, GA: US Department of Health and Human Services, 2005.
13. Lavery LA, Armstrong DG, Wunderlich RP, et al. Diabetic foot syndrome: evaluating the prevalence and incidence of foot pathology in Mexican Americans and non-Hispanic whites from a diabetes disease management cohort. *Diabetes Care* 2003; 26(5): 1435-38.
14. Rogers LC, Lavery LA, Armstrong DG. The right to bear legs - an amendment to healthcare: how preventing amputations can save billions to the US healthcare system. *J Am Podiatr Med Assoc* 2008; 98(2): in press.
15. Pecoraro RE, Reiber GE, Burgess EM. Pathways to diabetic limb amputation. Basis for prevention. *Diabetes Care* 1990; 13(5): 513-21.
16. Canavan RJ, Unwin NC, Kelly WF, Connolly VM. Diabetes and non-diabetes related lower extremity amputation incidence before and after the introduction of better organized diabetes foot care. Continuous longitudinal monitoring using a standard method. *Diabetes Care* 2008; 31(3): 459-63.
17. Uccioli L, Faglia E, Monticone G, et al. Manufactured shoes in the prevention of diabetic foot ulcers. *Diabetes Care* 1995; 18(10): 1376-78.
18. Armstrong DG, Holtz-Neiderer K, Wendel C, et al. Skin temperature monitoring reduces the risk for diabetic foot ulceration in high-risk patients. *Am J Med* 2007; 120(12): 1042-46.
19. Armstrong DG, Wrobel J, Robbins JM. Guest Editorial: Are diabetes-related wounds and amputations worse than cancer? *Int Wound J* 2007; 4(4): 286-87.
20. Ragnarson Tennvall G, Apelqvist J. Health-economic consequences of diabetic foot lesions. *Clin Infect Dis* 2004; 39(Suppl 2): S132-39.
21. Boulton AJ, Vileikyte L, Ragnarson-Tennvall G, Apelqvist J. The global burden of diabetic foot disease. *Lancet* 2005; 366: 1719-24.
22. Gordois A, Scuffham P, Shearer A, Oglesby A. The healthcare costs of diabetic peripheral neuropathy in the UK. *Diabet Foot* 2003; 6: 62-73.
23. Tennvall GR, Apelqvist J, Eneroth M. Costs of deep foot infections in patients with diabetes mellitus. *Pharmacoeconomics* 2000; 18(3): 225-38.
24. Apelqvist J, Ragnarson-Tennvall G, Persson U, Larsson J. Diabetic foot ulcers in a multidisciplinary setting. An economic analysis of primary healing and healing with amputation. *J Intern Med* 1994; 235(5): 463-71.
25. Ragnarson-Tennvall G, Apelqvist J. Prevention of diabetes-related foot ulcers and amputations: a cost-utility analysis based on Markov model simulations. *Diabetologia* 2001; 44(11): 2077-87.
26. Ortegón MM, Redekop WK, Niessen LW. Cost-effectiveness of prevention and treatment of the diabetic foot: a Markov analysis. *Diabetes Care* 2004; 27: 901-07.
27. Eneroth M, Larsson J, Apelqvist J, et al. The challenge of multicenter studies in diabetic patients with foot infections. *Foot* 2004; 14(4): 198-203.
28. Prompers L, Huijberts M, Apelqvist J, et al. High prevalence of ischaemia, infection and serious comorbidity in patients with diabetic foot disease in Europe. Baseline results from the Eurodiale study. *Diabetologia* 2007; 50(1):18-25.
29. van Houtum WH, Lavery LA. Outcomes associated with diabetes-related amputations in the Netherlands and in the state of California, USA. *J Intern Med* 1996; 240(4): 227-31.

V.A.C.[®] Therapy

Fast

Effective

Cost
Effective

Quality
of Life



Continuous
Therapy On
125mmHg



Better Wound Care at the touch of a button.

Our latest technology combines the proven efficacy of V.A.C.[®] Therapy with much greater ease of use.

